

# Educational Facilities Master Plan

## FY 2016



Eugene M. Karol, President  
Kelly D. McConkey, Vice President  
Joseph R. Chenelly, Member  
Dawn C. Balinski, Member  
Tracy H. McGuire, Member  
Alexya Brown, Student Member  
Nancy V. Highsmith, Interim Superintendent

BOARD OF EDUCATION OF CALVERT COUNTY  
Prince Frederick, Maryland 20678



EDUCATIONAL FACILITIES MASTER PLAN  
FOR FISCAL YEAR 2016

*Prepared in accordance with COMAR Section 23.03.02.02*

## TABLE OF CONTENTS

### **I. EDUCATIONAL FACILITIES MASTER PLAN**

|  |    |
|--|----|
| Vision for the Calvert County Public Schools.....            | 8  |
| Location .....   | 10 |
| Background Data .....  | 10 |
| Population Trends.....                                       | 11 |
| Population Projections .....                                 | 12 |
| Comparative Population Projections .....                     | 12 |
| Table I - Residential Building Permits.....                  | 14 |
| Community Analysis.....                                      | 14 |
| Planning.....  | 16 |
| Staff Ratio .....  | 20 |
| Organization Pattern .....                                   | 21 |
| School Attendance Areas .....                                | 21 |
| Property Disposal.....                                       | 22 |
| Transportation .....   | 22 |
| Human Resources .....  | 22 |
| Special Education.....                                       | 23 |
| Career & Technology Education.....                           | 24 |
| School Site Analysis - Southern Region .....                 | 26 |
| School Site Analysis - Central Region .....                  | 27 |
| School Site Analysis - Northern Region.....                  | 30 |
| School Site Analysis - Calvert Regional Facilities .....     | 32 |
| Birth Rates .....  | 33 |
| Table II - Births/Deaths Ratio .....                         | 34 |
| Instructional Plan Support Data .....                        | 34 |
| Public and Private School Enrollment .....                   | 35 |
| Table III - Enrollment.....                                  | 36 |
| Holding Power of Calvert County High Schools .....           | 37 |
| Table IV -Holding Power of Calvert County High Schools ..... | 37 |
| Enrollment Projections .....                                 | 38 |
| Table V - Enrollment Projections .....                       | 38 |
| FTE Enrollment Projections .....                             | 39 |
| FTE Enrollment Projections by Grade for 2024 .....           | 64 |

### **II. FACILITIES INVENTORY**

|  |    |
|--|----|
| Appeal Elementary, Barstow Elementary, Beach Elementary, Calvert<br>Elementary, Dowell Elementary, Huntingtown Elementary, Mt. Harmony<br>Elementary ..... | 66 |
| Mutual Elementary, Patuxent Elementary, Plum Point Elementary  |    |

|  |    |
|--|----|
| St. Leonard Elementary, Sunderland Elementary, Windy Hill Elementary   | 67 |
| Calvert Middle, Mill Creek Middle, Northern Middle, Plum Point<br>Middle, Southern Middle, Windy Hill Middle.....                          | 68 |
| Calvert High, Huntingtown High, Northern High, Patuxent High, Career and<br>Technology Academy, Calvert Country, Hunting Creek Annex ..... | 69 |

**III. FACILITY NEEDS**

|  |    |
|--|----|
| Facility Needs Summary .....   | 72 |
| Systemic Projects Summary.....   | 73 |
| Projected School Needs .....   | 74 |
| Letter from Maryland Department of Planning .....                                      | 75 |
| Non-Discrimination Statement .....   | 77 |
| Affidavit of Approval - Board of Education Meeting on June 14, 2012 .....              | 78 |
| Letter from Thomas Barnett, County Community Planning and Building<br>Department ..... | 79 |

**IV. APPENDIX**

|   |     |
|---|-----|
| Appendix A – Location .....                                       | 82  |
| Appendix B – Election Districts .....                             | 83  |
| Appendix C – Public Facilities .....                              | 84  |
| Appendix D – Water Plan.....                                      | 85  |
| Appendix E – Projected Regional Sanitary Districts.....           | 86  |
| Appendix F – Priority Preservation Areas Map .....                | 87  |
| Appendix G – Elementary School Boundaries .....                   | 88  |
| Appendix H - Middle School Boundaries.....                        | 89  |
| Appendix I - High School Boundaries .....                         | 90  |
| Appendix J – Existing Feeder Plan .....                           | 91  |
| Appendix K – Former School Inventory.....                         | 92  |
| Appendix L – School Closing Policy & Procedures 1510 &1510.1..... | 93  |
| Appendix M - Notification Chain Procedures 1510.2.....            | 95  |
| Appendix N - Employee Working Hours Procedures 1510.3.....        | 99  |
| Appendix O - School Facility General Information.....             | 103 |
| Appendix P - Directory of Schools .....                           | 173 |

SECTION I

EDUCATIONAL FACILITIES MASTER PLAN

**THIS PAGE LEFT BLANK**

## **EDUCATIONAL FACILITIES MASTER PLAN**

The philosophy, direction, and outcomes for this school system are determined by the Board of Education of Calvert County, with the assistance of the Superintendent and the professional staff. Goals of the staff, therefore, reflect the educational objectives as outlined in the basic philosophy of the school system.

Input for the philosophy, direction and outcomes is received from the professional staff, citizen advisory committees, parent-school organizations, and other similar community groups and agencies. Such input is essential to ensure relevance of the school program to perceived community needs.

Calvert County Public Schools (CCPS) and support facilities are well maintained to best serve the rigors of the instructional programs offered to our students and also those programs offered by our County Government and private interests.

The following text provides the basis for which our facility needs are established. It further reflects on our operating procedures, planning and community analysis, our inventory evaluation, and enrollment data.

## Vision for the Calvert County Public Schools

The citizens of Calvert County understand our free society requires educated and informed individuals who possess the skills needed to think critically, act intelligently and work creatively on matters of personal and common concern.

Public schools are essential for developing responsible citizens, providing equality of opportunity, and improving the lives of individuals and families.

Public schools increase the capacity of citizens to fully participate in and contribute to the civic, economic, cultural and social progress in our community, in our state, in our nation and in the world.

These are the aspirations for our schools, families and community:

### People

1. We have a school environment and culture that creates enthusiasm for learning, where all students are challenged to embrace the value of learning for its own sake.
2. We reach out to ensure that our families and community have access and open communication at every level of the educational system.
3. We have teachers and staff who are empowered to:
  - adapt to students' individual needs;
  - create improved and innovative learning environments; and
  - require the highest standards of work and discipline
4. We have students, teachers and staff who are:
  - recognized for their dedication and excellence;
  - respected and valued for their input and creativity; and
  - tolerant and sensitive to ethnic, cultural and individual differences
5. We have safe and orderly schools where we share accountability among students, parents, teachers, support staff, administrators and board members for academic excellence and consistently enforced standards of conduct.
6. We have partnerships with families, government, businesses, faith based and community organizations to promote superior academic and extra-curricular activities placing children first.
7. We have mechanisms for honest and effective communication among students,



families, teachers, support staff, administrators and board members.

### **Systems**

1. We have learning systems that integrate technology to achieve better instruction.
2. We fully and creatively utilize facilities to support education, recreation and community activities.
3. We have an objective employment process that is aware of the need to hire highly qualified people of diverse backgrounds.
4. We provide creative and effective use of funding that is appropriate to accommodate student growth, quality standards and equitable educational opportunities.
5. We have effective methods of ongoing evaluation of all aspects of the school system.
6. We have schools that reflect the highest standards of work, discipline and values.

### **Standards, Practices and Outcomes**

1. We have educational opportunities that are diverse, rigorous, challenging and fair.
2. We aspire to standards of our students' educational achievement that are second to none.
3. We graduate responsible and productive citizens.

\* \* \* \*

## **LOCATION**

Calvert County is a peninsula located approximately 20 miles southeast of Washington, D. C. and approximately 45 miles south of Baltimore. Maryland State Route 4, a four-lane highway, provides the main link for Calvert County residents to the greater Washington/Baltimore/Annapolis Metropolitan area. Maryland State Route 2 provides access to Annapolis and Anne Arundel County, with Route 231 providing the link to Charles County to the west. Route 4 South and the Thomas Johnson Bridge provide the link to St. Mary's County and the Patuxent Naval Air Station. This link is critical for residents employed at this facility.

## **BACKGROUND DATA**

There are two incorporated towns, Chesapeake Beach and North Beach, situated in the Northeast quadrant of the County and seven unincorporated Town Centers. The Town Centers are from north to south, Dunkirk, Owings, Huntingtown, Prince Frederick, St. Leonard, Lusby and Solomons. All of the Town Centers are situated along the Maryland Route 2 and 4 corridor and provide the commercial and service related businesses for Calvert residents.

The consequence of being a bedroom community to the Washington, Baltimore and Annapolis metropolitan areas is that the majority of wage earners are required to travel out of the county for employment. This scenario has not only created traffic congestion on the main arteries but it also diminishes the time citizens can dedicate to family and civic activities. Indirectly, many children are in "latch key" situations for an extended period of time each day and/or enrolled in day care and after-school programs. This scenario has a direct impact on school services.

Economic development that will support skilled craftsmen, technical trades, and professional employment opportunities continue to be elusive. Options that will allow for a reduction in the number of residents who must drive out of the county each day for employment continues to be a county priority. Although some small business enterprises have opted to locate in the county, more efforts continue to be focused on

attracting additional businesses to the county.

Traffic congestion along the Route 2 and Route 4 corridor through Calvert County continues to be a major concern for both our local government and the Maryland State Highway Administration. The Town Centers of Solomons, Prince Frederick, Huntingtown and Dunkirk experience rush hour delays and increased traffic accidents related to the congestion. The Maryland State Highway Administration (MSHA) has embarked on three traffic studies, the Thomas Johnson Bridge at the southern end of the county, the Prince Frederick corridor, and recently a study at the Huntingtown corridor to the north. The purpose of these studies is to determine the extent of needed future road improvements.

In keeping with the Prince Frederick Town Center master plan, the County has begun building portions of the “loop road” project in Prince Frederick. Presently the Armory Road to Main Street section of the “loop road” is under construction. The “loop road” will ease the congestion within the Prince Frederick Town Center.

### **POPULATION TRENDS**

Calvert County’s growth has now slowed due to both the slow growth initiatives imposed by the County Commissioners and the current economic conditions. Recent information provided by the Calvert County Department of Planning projects the population of the county to grow to 100,800 residents by the year 2022. The estimated current county population is 89,951.

Due to the growth patterns of the past decade, the County has had to invest in new school construction, public facilities, roads and other related infrastructure, all having a considerable financial impact.

In 2013, 252 residential building permits were issued throughout the county. The number of permits issued in 2013 was lower than the number issued in 2012. Permits being issued are generally from lots of record, rather than newly recorded subdivisions. Realities of the current economic situation have produced an inventory of unoccupied residential properties, a vast majority being foreclosures.

There are a number of developments and subdivisions in the planning stage or that have recently been recorded which, depending on the present economic climate, may come online over the next four years. Of interest, developers continue to work on projects in the Barstow, Calvert and Beach elementary schools areas.

**POPULATION PROJECTIONS**

Overall, our county growth projections indicate an annual increase of 1% or less through 2022. If we were to further refine the projections, we may find over the next year or two that our county population will remain level. This assumption is solely based on current economic factors obviously impacting housing starts and real estate trends.

The pattern of the growth within the county appears to be consistent with areas that are forecasted to grow. Those areas are the central part of the county surrounding the Prince Frederick Town Center and the northern part of the county which includes the Dunkirk Town Center and the Town of Chesapeake Beach. It is important to note that the Town of Chesapeake Beach, an incorporated area, is not subject to Calvert County’s adequate public facility regulations.

Our student enrollment projections reflect a decline through 2018.

See the Comparative Population Projections chart below.

**COMPARATIVE POPULATION PROJECTIONS**

| <u>Source</u>              | <u>2000</u> | <u>2005</u> | <u>2010</u> | <u>2015</u> | <u>2020</u> |
|----------------------------|-------------|-------------|-------------|-------------|-------------|
| Md. Department of Planning | 74,563      | 87,250      | 88,737      | 91,650      | 95,600      |
| Calvert Planning Dept.     | 75,000      | 88,000      | 88,737      | 94,100      | 98,800      |
| Bureau of Census           | 74,563      | 87,622      | 88,737      | ---         | ---         |

Presently the county growth rate is 1.0% or less. State projections are based primarily on birth/death rates and county job opportunities as a factor of immigration. Our county projections and the State's are within 1.1% of each other. Factors that continue to attract new families to Calvert County include, but are not limited to, the following:

- a. The proximity to Annapolis, Baltimore and Washington, D.C.
- b. The excellent reputation of the Calvert County Public School System.
- c. The Patuxent River Naval Air Station and the related businesses moving into the area.
- d. A sound county fiscal program with revenues from CCNPF and DLNGF that has helped to minimize the need to increase the property tax rate. The expansion of the Dominion Liquid Natural Gas Facility situated in southern part of the county will provide an expanded opportunity for construction and operations employment.
- e. Many attractive natural and recreational resources: Chesapeake Bay front, Patuxent River front, State parks, County recreational parks, marinas, the Calvert Marine Museum, the development of the Solomons area as a recreational center, and the new County aquatic center.

As noted earlier, the proposed strategies to control growth have caused developers to utilize their remaining building lot inventories. Residential building permits have dropped slightly in 2013 to 252 permits. Of the 96 permits issued in the 3<sup>rd</sup> District, 63 were issued in the Chesapeake and North Beach areas which are not subject to the County's adequate public facilities regulations. See Table I.

**TABLE I**

*Residential Building Permits*

| Year        | 1 <sup>st</sup> District |      | 2 <sup>nd</sup> District |      | 3 <sup>rd</sup> District |      | County |
|-------------|--------------------------|------|--------------------------|------|--------------------------|------|--------|
| <u>2004</u> | 218                      | *30% | 240                      | *33% | 269                      | *37% | 727    |
| <u>2005</u> | 170                      | *29% | 211                      | *36% | 205                      | *35% | 586    |
| <u>2006</u> | 79                       | *27% | 99                       | *38% | 95                       | *35% | 273    |
| <u>2007</u> | 74                       | 25%  | 118                      | 40%  | 102                      | 35%  | 294    |
| <u>2008</u> | 48                       | 21%  | 68                       | 30%  | 107                      | 49%  | 223    |
| <u>2009</u> | 34                       | 13%  | 96                       | 38%  | 123                      | 49%  | 253    |
| <u>2010</u> | 29                       | 15%  | 78                       | 40%  | 88                       | 45%  | 195    |
| <u>2011</u> | 32                       | 13%  | 91                       | 43%  | 98                       | 44%  | 221    |
| <u>2012</u> | 43                       | 16%  | 123                      | 45%  | 105                      | 39%  | 271    |
| <u>2013</u> | 31                       | 12%  | 125                      | 50%  | 96                       | 38%  | 252    |

\* Estimate

Percentage is of Total County Permits

**COMMUNITY ANALYSIS**

The housing boom in Calvert County ended in 2008. The combined effects of the economy and our county government’s measures to slow growth have reduced housing starts. State SB 236 “Septic Bill” limits major subdivisions in rural areas which potentially limits residential development to priority funded areas and town centers. The town centers of Solomons, Lusby and Prince Frederick and the incorporated towns of Chesapeake Beach and North Beach are the only development centers available with adequate infrastructure to allow major residential development. The town centers of St. Leonard, Huntingtown, Owings and Dunkirk are not as well positioned in terms of public infrastructure to accommodate development.

The town centers of Lusby, Prince Frederick, and Dunkirk and the incorporated Town of Chesapeake Beach have all experienced some commercial development which has impacted traffic during peak weekday commuting. Weekend traffic congestion can parallel weekday rush hour in these communities.

The Town of Chesapeake Beach has experienced the most dramatic increase in

residential development over the past ten year span. This area is very marketable and has the supporting public infrastructure to permit development. The town annexed two major developments into the corporate limits which has stressed the schools serving this region. The Town of Chesapeake Beach does not utilize or have an Adequate Public Facility Ordinance which would restrict the impact on the Calvert County resources and schools. We visit this issue later in the School Site Analysis section of this document

The Models and Guidelines for Smart Growth prepared by the Maryland Department of Planning has created a much closer integration of county planning and school facility planning efforts. This effort is most noticeable within the Prince Frederick Town Center region where our Career and Technology Academy, Calvert Middle School and our new Calvert High School will place all three venues on the same campus. New county connector streets with sidewalks provide walkability and safe route connections to not only the school campus but to present and future public amenities. Community use space has been incorporated into Calvert Middle School and Calvert High School such as space for the County Parks and Recreation program and a larger auditorium. The Career and Technology Academy provides instructional space for residents of the Calvert Pines Retirement Community and students attending the College of Southern Maryland. The new community aquatic center situated in Prince Frederick Town Center provides amenities to the public, plus an Olympic size pool to be utilized by our schools' swimming program.

There is a need for a community center to serve the 2<sup>nd</sup> Election District (middle county). The Calvert County Government has provided community centers within the 1<sup>st</sup> election district (south county) and the 3<sup>rd</sup> election district (north county). The County Commissioners and the Calvert County Public Schools Board of Education have discussed options to integrate a community center within an educational facility to be situated on county-owned/town center property directly adjacent to Calvert Middle School. The intent is to provide a community center for the Prince Frederick area and an educational facility that would provide a central county location for alternative

education programs presently scattered throughout the County. Considering the growing need to provide space for alternative instruction we may look to provide these services in an underutilized community or school facility. The present economic forecast has placed this project outside of the Capital Improvement Program Planning range.

The proposed expansion of the Dominion Liquid Natural Gas Facility is expected to have an impact on future economic and planning decisions involving the second election district (middle county) and first election district (south county).

Calvert County has embraced the Smart Growth initiatives endorsed by the Governor and the Maryland Department of Planning. The County Community Planning and Building Department have held a series of Town Center workshops in Prince Frederick to solicit community input on development. The Economic and Development Commission continues to explore and solicit development proposals for the former Calvert Middle School Site. The results of this effort are unknown at this time.

Other county infrastructure projects include the replacement of the aging detention center and public water and sewer improvements. CCPS and the County government continue to seek additional funds to provide sidewalks to the Appeal and Patuxent Elementary schools situated in the Lusby Town Center.

Schools which are situated in or serve Town Centers are so noted in the school site analysis regional descriptions found later in this document.

## **THE PLANNING PROCESS**

The annual Capital Improvement Program is completed in three phases: a survey phase, a developmental phase, and the hearing phase.

### **Survey Phase:**

During the survey phase, each school principal is invited to submit requests for



alterations or improvements based upon student population projections and program needs. The School Facility and Maintenance Department is also requested to submit projects which are of a systemic nature that will improve building operations, maintenance and energy consumption. Changes that may require facility alterations include: instructional technology systems, grade group organization, or instructional enhancements. The various demographic projections used in the developmental phase are completed and/or updated during this phase of the process.

Project planning also requires the involvement of our County Community Planning and Building Department to best locate new facilities within the designated growth centers of the county. Existing facilities which are situated outside of the designated growth areas and serve the designated growth areas will be considered as support infrastructure for the designated growth area. Calvert County has designated Town Centers as growth areas which are recognized by the State as Priority Funding Areas (PFA's). The PFA's, including the Towns of Chesapeake Beach and North Beach, are to reflect the Models and Guidelines Series 27, Smart Growth, Community Planning, and Public School Construction. Through communication with the various local government agencies, provisions for park and recreation space and community use spaces are provided within a school design.

### **Developmental Phase:**

The development phase involves the procurement of professional services such as architectural, engineering, civil, and consultants to assist with the eventual Interagency Committee on School Construction (IAC), Public School Construction Program (PSCP), Maryland Department of Education (MDE) and other local and jurisdictional project submissions.

Detailed educational specifications describe the instructional program requirements at each school level. Students, teachers, administrators, and community resource personnel, working with the established county curriculum, develop the

educational specifications for each facility. This document contains a description of the programs and activities to be offered at the school building. Architectural drawings are then developed consistent with the educational specifications. Reviews are conducted of all architectural drawings and equipment by members of the Board of Education and staff before acceptance and forwarded to the State Interagency Committee for Public School Construction. All education specifications shall be in accordance with Calvert County Public Schools Policy Statement #7004 for school renovation, revitalization and new construction projects. In addition, various government elements such as LEED, IBC and MAMA sheltering requirements are to be included as part of the educational specification.

Should a project involve the expansion of a secondary school facility, the Department of Instruction will need to coordinate the Career and Technology curriculum with MSDE.

School site selection(s) require approval per the guidelines defined by the IAC/PSCP. Said site approval must be accomplished prior to any state reviews and subsequent funding approvals. Site considerations must be compatible with any and all state and local ordinances. Also the site(s) must be within the guidelines of the County Comprehensive Master Plan and fall within or be adjacent to a Priority Funded Area. Site procurement shall be in accordance to Calvert County Public Schools Policy Statement #7210. Site size is reflected in the specific educational specification for a project. If a site size is not specified in an educational specification then our general rule of thumb, although unwritten, is a minimum 16 acres for an elementary school, 25 acres for a middle school and 80 acres for a high school. Rural and urban settings require different flexibilities.

It is important to note that after-hour use of our school facilities by our County Government Parks and Recreation Division is an important planning consideration. The athletic fields, gymnasium and some classroom spaces are utilized at our elementary and middle school campuses. The high school campuses are used infrequently due to the extensive after-hour use by the high school programs. The high

school auditoriums and media centers are often available for community use. The Calvert County Government has an inventory of additional athletic fields primarily for public and private use but the fields are not used by Calvert County Public Schools. The maintenance of the elementary and middle school athletic fields is shared by the County Government and Calvert County Public Schools.

With the opening of the Edward T. Hall Aquatic Center in Prince Frederick, our school system swim teams have been able to utilize this facility for training and meets. Having this facility eliminates the need to provide pools at our high schools.

All project procurements must fall within the procurement guidelines established by the IAC/PSCP, General Services Agency (GSA), Governors Office of Minority Affairs (GOMA), COMAR and CCPS Policy #7008 Minority Business Enterprise (MBE) and #5510 Bidding. This project development process is continuous and incorporates the principals of planning, evaluation, and revision as directed by changing community needs, adjustments in methods of instruction, or redefined educational objectives.

The Comprehensive Maintenance Plan is utilized to determine the building systems needs and physical plant upgrades. With the exception of emergency issues, the projects listed in the Maintenance Plan are coordinated with the Capital Improvement requests annually.

We are seeing an increased number of students in need of specialized instruction. Language barriers, economic disadvantages and behavior issues have begun to put a strain on existing space and staffing. Serving these students requires individualized instruction. The need for smaller spaces may cause us to rethink our educational programs and facilities in the very near future. There is a growing demand in a number of our schools for the Free and Reduced Meal Program. Schools having 35% or more participation in the program qualify to participate in the Qualified Zone Academy Bonds (QZAB) Program for school construction funds. As of September 30, 2013 the following schools are over 35%: Appeal Elementary, Barstow Elementary, Calvert Country, Calvert Elementary, Dowell Elementary, Patuxent Elementary, St. Leonard

Elementary, Mill Creek Middle and Southern Middle schools.

**Hearing Phase:**

Individual school and countywide student enrollment projections, school grade placement projections, overall county population projections, and other similar studies relative to the total Calvert County environment are studied to arrive at the specific group of projects that are to make up the Superintendent's recommended Capital Improvement Program.

The Superintendent's recommended Capital Improvement Program is presented to the Board of Education of Calvert County in a public session. This presentation offers citizens or groups an opportunity to comment on the merits of the plan.

The Superintendent may modify the program predicated on input from the public, after which it is submitted to the Board of Education for final approval. It is then submitted to the County Commissioners for their approval and, finally, to the Maryland State Interagency Committee for Public School Construction.

**STAFFING RATIOS**

- The staffing ratio for Pre K is one to twenty- five.
- The staffing ratio for kindergarten is one (plus a classroom assistant) to twenty-five.
- The staffing ratio for grades 1 through 12 is one to twenty- five.
- The Special Education staffing plan adopted by the Board provides for a hybrid census model.
- These ratios can fluctuate due to enrollment, available staff and funding levels provided by the State and Local Governments.

## **ORGANIZATIONAL PATTERN**

The organizational pattern for the Calvert County Public Schools is structured as follows:

- Elementary Schools: Pre K through 5
- Middle Schools: Grades 6 through 8
- High Schools: Grades 9 through 12
- Comprehensive Special Education Services are provided to individuals pre-school through age 21.

## **SCHOOL ATTENDANCE AREAS**

The Calvert County Public Schools maintains specific school attendance areas for each elementary and secondary school. Redistricting is a necessary consideration when overcrowding occurs at a particular school. When changes in school attendance areas are considered, the Superintendent and the Board of Education develop proposed changes that are presented to the public for comment and consideration prior to establishing fixed school boundaries. The following considerations are incorporated when this occurs.

- Establish boundaries that follow natural or major man-made landmarks,
- Minimize the number of students and families that may be affected by redistricting,
- Develop boundaries that support safe and reasonable school bus transportation patterns,
- Provide for racial balance at each facility, and
- Provide for anticipated growth at each affected school.

School attendance areas in Calvert County are very reliant on geographic solutions. This county is subdivided by many tributaries of the Chesapeake Bay which do not have direct crossings. Thus our bus routes must, in most cases, traverse to the MD Route 4 corridor in order to move in a northerly or southerly direction.

Redistricting procedures are outlined under Calvert County Public Schools Policy Statement #4400, Redistricting and School Attendance Areas.

### **PROPERTY DISPOSAL**

The Calvert County Public Schools follows the procedures outlined in Article 4, Section 44(C) of the Annotated Code when disposing of real property.

### **TRANSPORTATION**

Calvert County is still very much rural in nature. Established communities, as well as newly planned developments, are set back from major transportation arteries. 99% of our student population is eligible for bus service. We estimate a ridership of 80% after parent drop offs and student drivers. During the 2014-2015 school year, 157 buses will be needed to cover approximately 360 routes, for an average total of 3.3 million transportation miles per year.

Of the 157 buses, 32 buses are used to transport special education students to various in-county schools housing special services. Of the 32 special education buses, five (5) buses are used to transport special education students to six (6) out-of-county schools. Calvert County also partners with school systems from surrounding counties to provide transportation to two (2) other out-of-county schools.

Throughout the school year, changes in routes may be necessary due to changes in student demographics. Routes are reviewed regularly with changes being made as required.

### **HUMAN RESOURCES POLICY**

The personnel policies of a school system are an essential part of the program of public education in a community. The philosophy of the school system and the community is generally reflected in these policies.

Through personnel policies, the Calvert County Public School System established

conditions that attract and retain a most highly qualified and dedicated staff. The reputation of the school system attracts applicants who are well qualified for professional and support positions.

Calvert County is projected to experience no student growth over the next planning cycle. Fiscal issues may impact how our schools are staffed plus our enrollments are not as they once were, thus staffing needs are not as prominent as in previous cycles. The need for additional student services and support staff for itinerant and special education will require additional space to accommodate those needs. The Human Resources Department will need to recruit specialized individuals to meet the needs of these additional student services. The Human Resources Department utilizes recruiting strategies that attract the most qualified applicants who are representative of all race and ethnic backgrounds.

Calvert County has been able to fill the majority of the teaching vacancies that have occurred in the last several years. Some critical positions in special education, particularly speech pathologists, as well as regular education teachers of mathematics, foreign language and certain science areas have been extremely difficult to fill. However, through aggressive recruiting strategies and the fact that Calvert County is a very desirable teaching environment, professional vacancies have been kept to a minimum.

The Public School System encourages all employees to continue to improve upon their skills and training through in-service and graduate work. Graduate programs and in-service training experiences are provided and/or supported by the school system.

### **SPECIAL EDUCATION**

Calvert County Public School is dedicated to providing a Free Appropriate Public Education (FAPE) to children and youth with disabilities ages birth to 21. These services include effective classroom instruction, supplemental aids and supports, and related services as necessary.

Calvert County Public Schools continues to provide a full continuum of services

to students with special needs including: services in general education and co-taught classes; resource and pull-out programs; as well as regional programs and a public separate day school to address the needs of low-incident populations. Behavior Development Program (BDP), Integrated Academics (IA), Structured Learning Environment (SLE) and Intensive Structured Learning Environment (ISLE) are the programs serving these populations.

The focus of our school system to prepare each student to become productive citizens in the 21<sup>st</sup> century through rigorous and relevant curriculum and instruction will require intensive professional development. Universal design for learning/responsive teaching and the increased effective use of technology in classroom instruction will enhance the opportunities for learning for all students. Building positive school cultures and relationships among students, staff, and the community is an essential component of success and achievement.

The maintenance and/or expansion of instructional programs for students with special needs will continue to have an impact on facility needs in the future. Classroom space must be considered along with space for planning teams, staff development, sharing of content and strategies, and related services. Adequate space is needed for students with functional, physical, sensory, or behavioral needs that allow for flexible grouping and academic differentiation.

### **CAREER AND TECHNOLOGY ACADEMY**

Calvert County Public Schools offers a broad array of Career and Technology Education (CTE) programs to its students - 27 programs in all. Of these programs, fifteen are offered at our shared time center, the Career and Technology Academy (CTA). Students from all four of our high schools who are interested in pursuing a career in one of these programs attend the CTA for half of their day during 11<sup>th</sup> and 12<sup>th</sup> grades. One program, Fire and Rescue, is taught in conjunction with MFRI at a local fire department in the county. The remaining eleven programs are taught at the home high schools.



The fifteen programs offered at the Career and Technology Academy are focused on preparing students for the world of work and post-secondary education. As an integral part of our secondary curriculum, students from all of our high schools can opt to attend the center. In fact, 474 have requested courses for the 2014-2015 school year.

Working closely with the business community through our local advisory and program advisory committees, all the technical and craft areas are continually reviewed and updated. This continual communication and the requirement of the Maryland Department of Education to stay current form the basis for the creation of new courses and the modification of others.

Students also have the opportunity to participate in internships and a cooperative work experience in their chosen field of study. Local businesses make these positions available and provide feedback to the supervising teachers regarding each student's performance and their preparation at the Career and Technology Academy. The success of this effort is reflected in a placement rate of 80% of our graduating seniors in their chosen career.

Besides the programs which we offer at the Career and Technology Academy, we have several CTE programs which are housed at the regular high schools.

- Within the Business Management and Finance (BMF) cluster, we have four programs of study. We have 181 students enrolled in these programs. Courses within the BMF cluster are taught in business department computer labs.
- In the Human Resource Services (HRS) cluster we have three programs. Two of these programs, Criminal Justice and Fire Science, are well established and one program, Teacher Academy of Maryland, is in its third year of implementation this year. We have 91 students in Criminal Justice. Courses in this program are taught in the regular classroom with frequent visits by law enforcement officers. This year we have 16 students in our Fire Science program. This is taught off site at a local fire department and lead by MFRI instructors. Our Teacher Academy program has

about 151 students enrolled and is taught in the regular classroom.

- We now offer both Project Lead the Way (PLTW) programs at all four (4) of our high schools. 529 students are enrolled in the Pre-engineering program and 309 students are enrolled in the Biomedical Sciences program. Computer labs, biology labs and general classroom spaces are used to deliver this specialized instruction.
- We began a new offering at Calvert High School this year entitled the Curriculum for Agricultural Science Education (CASE). This program includes four courses and is taught in a science lab which is outfitted with computer technology to allow the students to conduct research on the internet. We have 17 students enrolled in the first course of the program.

### **SCHOOL SITE ANALYSIS - CALVERT SOUTHERN REGION**

***APPEAL ELEMENTARY, DOWELL ELEMENTARY, PATUXENT ELEMENTARY, ST. LEONARD ELEMENTARY, MUTUAL ELEMENTARY, SOUTHERN MIDDLE, MILL CREEK MIDDLE, AND PATUXENT HIGH SCHOOLS***

This group of schools collectively serves the southern region of Calvert, or what might be considered, but is not limited to, the first election district of the county.

Appeal and Patuxent elementary schools are situated within the Lusby Town Center and St. Leonard Elementary is located in the St. Leonard Town Center. Dowell Elementary, Mill Creek Middle and Patuxent High School are situated between the Lusby and Solomons Town Centers. The separation between these two town centers is approximately one mile. Southern Middle School is three miles to the north of the Lusby Town Center while Mutual Elementary School is approximately 3 miles to the west of the St. Leonard Town Center.

This region is very well master planned for the future in terms of tourism, residential growth areas, business development and its proximity to the Patuxent Naval Air Station, St. Mary's Technology corridor, the Patuxent Business Park, the Calvert

Cliffs Nuclear Power facility and the Dominion Liquid Natural Gas Facility.

The County Adequate Public Facility Report for this planning cycle reveals that none of the school geographical attendance areas of this region are closed for the recording of new residential subdivision development. Of the three regions discussed in this report, the southern region is the least likely to see a major increase in population growth over the next five years. There are no new major housing subdivisions being proposed. The Chesapeake Ranch Estates, situated to the south and east of the Lusby Town Center, is the only major subdivision with an inventory of developable lots on record. With the proposed expansion of the Dominion Liquid Natural Gas Facility there will be a short term elevation in construction related activity for a few years. The number of permanent operations personnel will not be significant.

The schools referenced above are well positioned both geographically and in enrollment capacity for any growth that will occur over the next five planning cycles. This statement excludes consideration related to the possibility of the introduction of Pre-Kindergarten to the public school arena. There are no plans for major expansions and or renovations/revitalizations for these schools. Only systemic projects are in the future Capital Improvements Program requests. The schools in this region are in the good to excellent facility maintenance category. We are considering a different school Administrative/Management approach for the Appeal/Patuxent Elementary School Campus. A shift in grade levels attending each school is being considered to provide adequate space and resources for the new state testing requirements.

### **SCHOOL SITE ANALYSIS - CALVERT CENTRAL REGION**

***BARSTOW ELEMENTARY, CALVERT ELEMENTARY, HUNTINGTOWN ELEMENTARY, PLUM POINT ELEMENTARY, CALVERT MIDDLE, PLUM POINT MIDDLE, CALVERT HIGH SCHOOL, AND HUNTINGTOWN HIGH SCHOOLS***

This group of schools collectively serves the central region of Calvert, or what might also be considered, but is not limited to, the second election district of the county. Barstow Elementary, Calvert Elementary, Calvert Middle and Calvert High schools all

sit within or adjacent to the Prince Frederick Town Center. Huntingtown Elementary School is one mile from the Huntingtown Town Center and Huntingtown High School borders the Huntingtown Town Center. The Plum Point Elementary and Middle School campus is situated between the Prince Frederick and Huntingtown Town Centers and the Town of Chesapeake Beach.

This region is more spread out than the southern region, both geographically and in relative distance between town centers. This region is home to the County Governmental Center and Courthouse. The road network leads west on the Route 231 corridor to the Prince Frederick Business Park and Charles County and the Route 2/4 corridor to the employment centers of Washington, D.C. to the north and the Patuxent Naval Air Station to the south. Also the region's proximity to the planned expansion of the Dominion Liquified Natural Gas Facility will cause some people to relocate to this area. But the impact will be light. The commercial and retail base in this region has slowed this past year in contrast to the previous two years. Major road improvements to the Route 2/4 corridor within the Prince Frederick Town Center have been placed on hold until state funding becomes available. As mentioned earlier the county continues to expand portions of the Prince Frederick Loop Road.

The County Adequate Public Facility Report for this planning cycle reveals that none of the school geographical attendance areas of this region are closed for the recording of new residential subdivision development. There are three large subdivisions currently under development in the Prince Frederick Town Center, one of which will contain a mix of single family homes, townhouses and apartments.

The schools within the Prince Frederick Town Center are well positioned for the future projected growth of this region for the next five years. The recently completed Calvert High School, will provide additional capacity should it be needed in the future for regional relief. All of the schools in this region are in good to excellent standing in the facility maintenance category. Only systemic requests are being proposed in the Capital Improvements Program.

Barstow Elementary School will begin to see an enrollment increase over the next

five years. This increase is a result of a residential development that went dormant due to the economy has begun to develop. The pace of the build out is not known at this time.

Huntingtown High School, located west of the Huntingtown Town Center, is not as well positioned to receive additional growth in the future and may require adjustments to the school geographical attendance areas in the out-year forecast. There are a number of smaller subdivisions both in existence and in the planning phase that could go online pending the current economic climate. None of these subdivisions are on the scale of those underway in the Prince Frederick area. For this planning cycle Huntingtown High School is at 97% capacity, in the County Adequate Public Facilities Report. The schools are in excellent condition and there are no systemic requests proposed in the Capital Improvements Program.

Huntingtown Elementary School, also adjacent to the Huntingtown Town Center, is not over enrolled and there are no major development plans proposed for this area. There is a need to address onsite bus and traffic issues in the near future.

The Plum Point Elementary and Middle school campuses, by virtue of their location between the Prince Frederick Town Center, the Huntingtown Town Center and Chesapeake Beach, are impacted by numerous projects. The most compelling concern is the continued expansion of the Town of Chesapeake Beach. Chesapeake Beach is an incorporated municipality within Calvert County and is not subject to the County adequate public facility regulations. Continued residential development in the Town of Chesapeake Beach will not only impact Beach Elementary School situated in the town, but Plum Point Elementary, Plum Point Middle, and Huntingtown High School with in the central region depending on present and future school geographical attendance areas.

None of the school geographic attendance areas of this region are closed for the recording of residential subdivision development. The Board of Education has adjusted the geographical attendance area of Plum Point Elementary School to receive a portion of the Beach Elementary School attendance area to alleviate the over enrollment issue.

All of the schools are in good to excellent condition. There are no plans to expand the capacities of these two schools. There are no systemic projects proposed in the Capital Improvements Program for these schools. Should the state introduce the addition of pre-k to the public school arena the impact the elementary schools will need to be considered.

### **SCHOOL SITE ANALYSIS - CALVERT NORTHERN REGION**

***BEACH ELEMENTARY, MT. HARMONY ELEMENTARY, SUNDERLAND ELEMENTARY, WINDY HILL ELEMENTARY, NORTHERN MIDDLE, WINDY HILL MIDDLE, AND NORTHERN HIGH SCHOOLS***

This group of schools collectively serves the north region of Calvert, or what also might be considered, but is not limited to, the third election district of the county. Only Beach Elementary School is situated within a Priority Funding Area which is the Town of Chesapeake Beach. The Northern Middle and High School campuses serve the Town Centers of Dunkirk, Owings and the Towns of Chesapeake Beach and North Beach. The Dunkirk and Owings Town Centers and the Towns of Chesapeake Beach and North Beach are the four main development zones in the area. None are in close proximity to each other. This allows for various areas of development throughout this region, which accounts for the placement of the remaining schools outside of the town centers.

As stated above, this area is considerably more spread out in comparison to the southern and central regions. It is also the more desirable region for growth due to its proximity to the Annapolis, Baltimore and Washington employment centers. With the exception of Chesapeake Beach, growth in this area has been somewhat kept in check by the lack of public utilities. Commercial/retail development has been slowly added to the Dunkirk Town Center which adds to the attractiveness of the area.

The County Adequate Public Facility Report for this planning cycle reveals four of the schools in this region, Northern Middle School at 100%, Northern High School at

117%, Mount Harmony Elementary School is at 102% and Beach Elementary School at 119% are over capacity limits. Those school geographical attendance areas are closed for the recording of new residential subdivision development. Development within those school geographical attendance areas is closed. There are a number of existing subdivisions with an inventory of buildable lots which may come online as the current economic picture clears. Other than the four schools mentioned above, the remaining schools in the region are positioned to handle additional capacity. In the FY 2015 CIP, planning funding was approved for the replacement of Northern High School. In the near future, Beach Elementary School will be slated for replacement in the Capital Improvements Program. Beyond the present Capital Improvement forecast, improvements to Northern Middle School are planned. A future needs assessment will indicate the scope of those requests.

The remaining schools in this region are in the good to excellent range in the facility maintenance category with only systemic needs outlined in the Capital Improvements plan. All of the elementary schools in this area will require re-evaluation should the state implement pre-k to the public school arena.

The Board of Education adjusted the geographical attendance areas of Beach Elementary School and Windy Hill Elementary School to alleviate the Beach Elementary School enrollment issue. Beach Elementary School will remain over capacity based upon the Calvert County adequate public facilities regulations. The Town of Chesapeake Beach is not subject to these regulations, thus increased residential development within the town may impact the school's capacity. Continued residential development in the Town of Chesapeake Beach will impact not only Beach Elementary School but Sunderland Elementary School, Windy Hill Elementary School, Northern Middle School, Windy Hill Middle School and Northern High School within the northern region depending on the present and future school geographical attendance areas. In June 2013, the Board of Education sent a resolution to the Chesapeake Beach Town Council and to the Board of Calvert County Commissioners requesting a 'collaborative process' be instituted between the 2 governing authorities that would

explore ways to 'better predict growth in the Chesapeake Beach area and ways to have shared infrastructure investments.

### **CALVERT REGIONAL FACILITIES**

#### ***CAREER AND TECHNOLOGY ACADEMY, CALVERT COUNTRY SCHOOL AND HUNTING CREEK ANNEX***

This group of schools serves in different capacities to provide more focused instruction which can be better delivered in regional facilities. All three are situated in town centers.

The Career and Technology Academy situated in the Prince Frederick Town Center provides a venue for the delivery of Career Technology Education for all four of our high schools. The facility houses introductory through advanced levels of instruction in the technical trades, automotive trades, construction trades, computer trades, media, cosmetic, engineering, health and culinary disciplines. The Career and Technology Academy, although included, has a minor impact on the county Adequate Public Facility Report. It is in excellent condition.

The Calvert Country School is situated in the Prince Frederick Town Center area. It provides comprehensive services for our severely and profoundly handicapped school age residents as well as those with emotional issues from PreK to 21 years of age. Some of our less handicapped individuals are provided services within their home schools. The Country School does not affect the county Adequate Public Facility Report. The facility is in good shape, with possible HVAC improvements in a future Capital Improvement Program submission.

The Hunting Creek Annex is situated in the Huntingtown Town Center. This is a very old facility built in 1944 and having an addition completed in 1960. The building houses various special education staff who engage in comprehensive assessment testing of young children and provide parent consultations. The following programs are housed at the Annex:



- ∞ Adult Education Program: provides basic skill instruction and diploma preparation to students over 16 and not currently enrolled in the K-12 system. The Adult Education Office is located in the building and 3 classes are offered (two evening and one daytime).
- ∞ Assistive Technology: provides AT services to children in the Special Education category. Children do not receive these services in the building.
- ∞ Child Find: provides screening, assessment and development of IEPs for children 3 – 5. Students who qualify for services receive them at their home school.
- ∞ Infant and Toddlers: serves children from birth to three with developmental delays and/or disabilities. Children may be evaluated at HCA, but they usually receive services at home or at a day care facility. Some service is provided here during the summer break. Occasionally, special events for children are offered in the building.
- ∞ Parent Connections: provides support and education for parents of special needs children. Several times a year this program offers a play group in the building for parents and children.

Calvert County Public Schools is assessing the need for an increase in Alternative Education facilities beyond what we are currently providing. There continues to be a need to provide both an alternative venue and specialized programming for students who demonstrate difficulty performing in a traditional classroom setting. Placement of both elementary and secondary aged students into an alternative setting is generally a decision made by the school system in collaboration with the student and his/her parents and guardian. This facility may include both general and special education students.

### **BIRTH RATES**

Birth rate data reported from the Maryland Center for Health Statistics for 2012

demonstrates a slight decrease in the number of births in the county. (See Table II)

**TABLE II**  
*Number of Resident Births and Deaths*  
*Calvert County, Maryland*  
*2002 - 2012*

| YEAR | NUMBER OF LIVE BIRTHS* | NUMBER OF DEATHS | RATIO: BIRTHS TO DEATHS |
|------|------------------------|------------------|-------------------------|
| 2002 | 1057 + 4.4%            | 538 - 3.2%       | 1.96                    |
| 2003 | 997 - 5.7%             | 577 + 7.2%       | 1.73                    |
| 2004 | 1016 + 1.9%            | N/A              | --                      |
| 2005 | 1001 - 1.5%            | 606 + 5.0%       | 1.65                    |
| 2006 | 1008 + 0.7%            | 615 + 1.5%       | 1.64                    |
| 2007 | 978 - 3.0%             | 611 - 0.7%       | 1.60                    |
| 2008 | 954 - 2.5%             | 609 - 0.3%       | 1.57                    |
| 2009 | 924 - 3.1%             | 586 - 3.8%       | 1.58                    |
| 2010 | 902 - 2.4%             | 577 - 1.5%       | 1.56                    |
| 2011 | 956 + 6.0%             | 627 + 8.5%       | 1.52                    |
| 2012 | 913 - 4.4%             | 616 - 1.7%       | 1.48                    |

\* Source: Maryland Center for Health Statistics

NOTE: Plus or minus (+/-) denotes change from previous year.

**INSTRUCTIONAL PLAN SUPPORT DATA**

The inventory of resources and services available within the community to support the instructional plan is referred to as support data. It includes the health, transportation, cultural services, and other auxiliary services which could augment the school program.

Contained within the Appendix are maps which indicate the basic support data. Appendix A illustrates the general locale of Calvert County. Appendix B indicates the election districts in the county. Appendix C depicts current public facilities in the county which augment and support the public school system. Appendix D and Appendix E illustrate the Calvert County Water and Sewerage Plans. Appendix F

outlines the 2004 Comprehensive Plan for Calvert County which includes the Arterial Roadways. Appendix G illustrates our elementary school boundaries, Appendix H illustrates our middle school boundaries and Appendix I illustrates our high school boundaries. Appendix J illustrates the Calvert County Public Schools existing feeder plan.

### **PUBLIC AND PRIVATE SCHOOL ENROLLMENT**

Public and private school enrollments are reported in *Table III* shown below. The combined enrollment for the non-public schools represents 4% of the total school enrollment in Calvert County. The public schools enroll the remaining 96%. The Calvert County Public Schools pre-kindergarten program is limited to those students falling into various socioeconomic indicators and the program is not offered at all of our elementary schools. Thus, only a portion of all four-year old children in the county attend a public school pre-kindergarten or special pre-kindergarten program. There are nine (9) non-public, church, nursery or early childhood establishments which report 125 pre-kindergarten four-year olds. It is not possible to determine which of these children would be eligible to attend a Calvert County Public Schools program and whether the private school program being offered is in fact a pre-kindergarten curriculum. That said, we are no longer providing a pre-kindergarten comparison in *Table III*.

**TABLE III**  
*Public and Private School Enrollment for Calvert County 2009 - 2014*

| Years        | Grades | Calverton School (Private) | Our Lady Star of the Sea (Parochial) | Cardinal Hickey Academy (Parochial) | Tidewater School (Private) | King's Landing Academy (Parochial) | Total Private & Parochial | Calvert County Public Schools | % Public Schools Enrollment Total |
|--------------|--------|----------------------------|--------------------------------------|-------------------------------------|----------------------------|------------------------------------|---------------------------|-------------------------------|-----------------------------------|
| 2009         | Pre-K  | 0                          | 0                                    | 0                                   | 0                          | 0                                  | 0                         | 343                           | 0                                 |
| 2010         | K      | 27                         | 14                                   | 30                                  | 12                         | 2                                  | 85                        | 1047                          | 80%                               |
|              | 1-5    | 105                        | 88                                   | 122                                 | 22                         | 6                                  | 343                       | 5917                          | 95%                               |
|              | 6-8    | 103                        | 56                                   | 77                                  | 0                          | 3                                  | 239                       | 3906                          | 94%                               |
|              | 9-12   | <u>153</u>                 | <u>0</u>                             | <u>0</u>                            | <u>0</u>                   | <u>9</u>                           | <u>162</u>                | <u>5725</u>                   | <u>97%</u>                        |
| <b>TOTAL</b> |        | <b>398</b>                 | <b>158</b>                           | <b>294</b>                          | <b>41</b>                  | <b>20</b>                          | <b>917</b>                | <b>17,004</b>                 | <b>95%</b>                        |
| 2010         | Pre-K  | 0                          | 0                                    | 0                                   | 0                          | 0                                  | 0                         | 385                           | 0                                 |
| 2011         | K      | 16                         | 9                                    | 22                                  | 7                          | 2                                  | 56                        | 1049                          | 95%                               |
|              | 1-5    | 112                        | 78                                   | 121                                 | 22                         | 2                                  | 335                       | 5843                          | 95%                               |
|              | 6-8    | 90                         | 53                                   | 78                                  | 0                          | 2                                  | 223                       | 3854                          | 95%                               |
|              | 9-12   | <u>157</u>                 | <u>0</u>                             | <u>0</u>                            | <u>0</u>                   | <u>10</u>                          | <u>167</u>                | <u>5763</u>                   | <u>97%</u>                        |
| <b>TOTAL</b> |        | <b>375</b>                 | <b>140</b>                           | <b>221</b>                          | <b>29</b>                  | <b>16</b>                          | <b>781</b>                | <b>16,894</b>                 | <b>96%</b>                        |
| 2011         | Pre-K  | 0                          | 0                                    | 0                                   | 0                          | 0                                  | 0                         | 386*                          | 0                                 |
| 2012         | K      | 25                         | 8                                    | 22                                  | 9                          | 0                                  | 64                        | 1037                          | 94%                               |
|              | 1-5    | 105                        | 59                                   | 118                                 | 23                         | 0                                  | 305                       | 5793                          | 95%                               |
|              | 6-8    | 70                         | 41                                   | 69                                  | 0                          | 0                                  | 180                       | 3779                          | 95%                               |
|              | 9-12   | <u>156</u>                 | <u>0</u>                             | <u>0</u>                            | <u>0</u>                   | <u>0</u>                           | <u>156</u>                | <u>5496</u>                   | <u>97%</u>                        |
| <b>TOTAL</b> |        | <b>356</b>                 | <b>108</b>                           | <b>209</b>                          | <b>32</b>                  | <b>NR</b>                          | <b>705</b>                | <b>16,105</b>                 | <b>96%</b>                        |
| 2012         | Pre-K  | 0                          | 0                                    | 0                                   | 0                          | 0                                  | 0                         | 364*                          | 0                                 |
| 2013         | K      | 13                         | 10                                   | 15                                  | 25                         | 0                                  | 63                        | 1060                          | 94%                               |
|              | 1-5    | 98                         | 63                                   | 103                                 | 15                         | 0                                  | 279                       | 5707                          | 95%                               |
|              | 6-8    | 60                         | 50                                   | 59                                  | 0                          | 0                                  | 169                       | 3770                          | 96%                               |
|              | 9-12   | <u>140</u>                 | <u>0</u>                             | <u>0</u>                            | <u>0</u>                   | <u>0</u>                           | <u>140</u>                | <u>5352</u>                   | <u>97%</u>                        |
| <b>TOTAL</b> |        | <b>311</b>                 | <b>123</b>                           | <b>177</b>                          | <b>40</b>                  | <b>NR</b>                          | <b>651</b>                | <b>15,889</b>                 | <b>96%</b>                        |
| 2013         | Pre-K  | 0                          | 0                                    | 0                                   | 0                          | 0                                  | 0                         | 372*                          | 0                                 |
| 2014         | K      | 12                         | 12                                   | 22                                  | 8                          | 0                                  | 54                        | 1053                          | 95%                               |
|              | 1-5    | 92                         | 67                                   | 101                                 | 16                         | 0                                  | 276                       | 5675                          | 95%                               |
|              | 6-8    | 76                         | 53                                   | 59                                  | 0                          | 0                                  | 188                       | 3794                          | 95%                               |
|              | 9-12   | <u>149</u>                 | <u>0</u>                             | <u>0</u>                            | <u>0</u>                   | <u>0</u>                           | <u>149</u>                | <u>5337</u>                   | <u>97%</u>                        |
| <b>TOTAL</b> |        | <b>329</b>                 | <b>132</b>                           | <b>182</b>                          | <b>24</b>                  | <b>NR</b>                          | <b>667</b>                | <b>15,859</b>                 | <b>96%</b>                        |

\*Not part of total

## **HOLDING POWER OF CALVERT COUNTY HIGH SCHOOLS**

The high school enrollment by grades from 2004 to the present is outlined in *TABLE IV*, to show grades beginning with 9 and ending with 12. The holding power is reflected as a percentage of a graduating class of students from their freshman year to 12<sup>th</sup> grade.

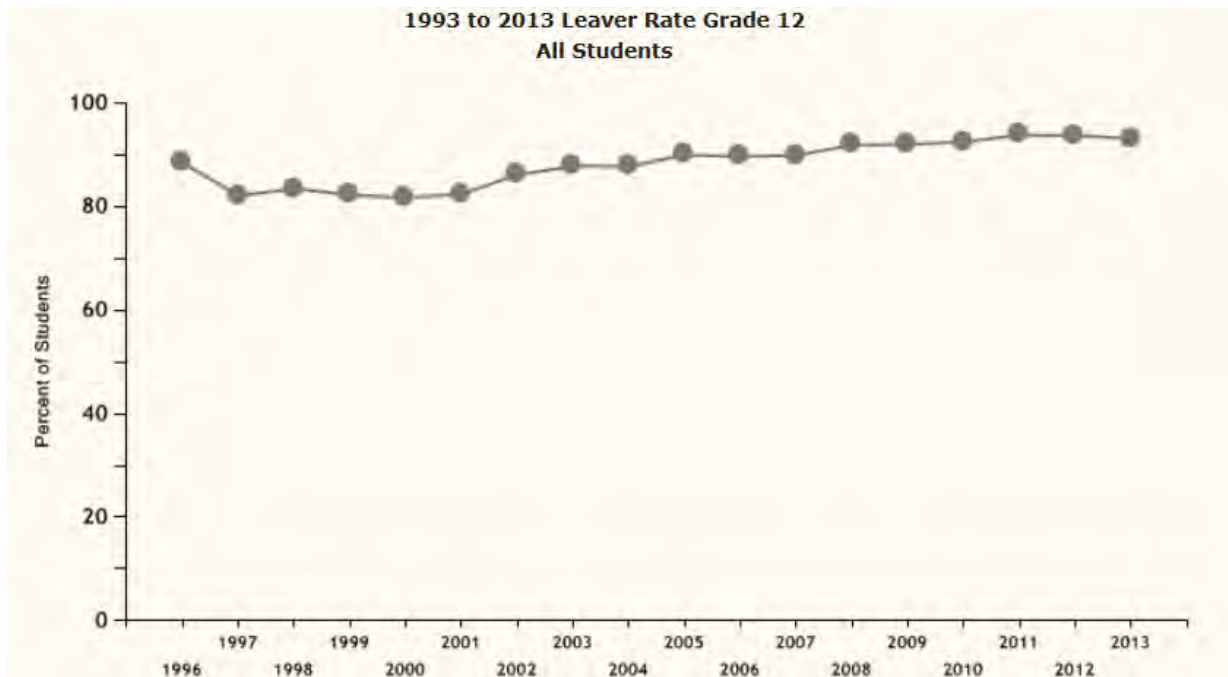
This data does not consider failures or retention of students, immigration, or emigration. Although the yearly enrollment fluctuates slightly, the holding power has remained constant. Our graduation percentage for 2013 is 92%. (Maryland Report Card)

**TABLE IV**

### *Holding Power of Calvert County High Schools*

GRADES

| School Year | 9    | 10   | 11   | 12   | %   |
|-------------|------|------|------|------|-----|
| 2004        | 1407 | 1260 | 1165 | 1135 | 90  |
| 2005        | 1576 | 1533 | 1420 | 1232 | 88  |
| 2006        | 1547 | 1514 | 1450 | 1412 | 100 |
| 2007        | 1530 | 1468 | 1414 | 1463 | 100 |
| 2008        | 1456 | 1452 | 1389 | 1398 | 89  |
| 2009        | 1492 | 1410 | 1413 | 1410 | 91  |
| 2010        | 1421 | 1459 | 1369 | 1443 | 94  |
| 2011        | 1387 | 1378 | 1353 | 1378 | 95  |
| 2012        | 1349 | 1342 | 1300 | 1361 | 91  |
| 2013        | 1340 | 1319 | 1307 | 1338 | 94  |

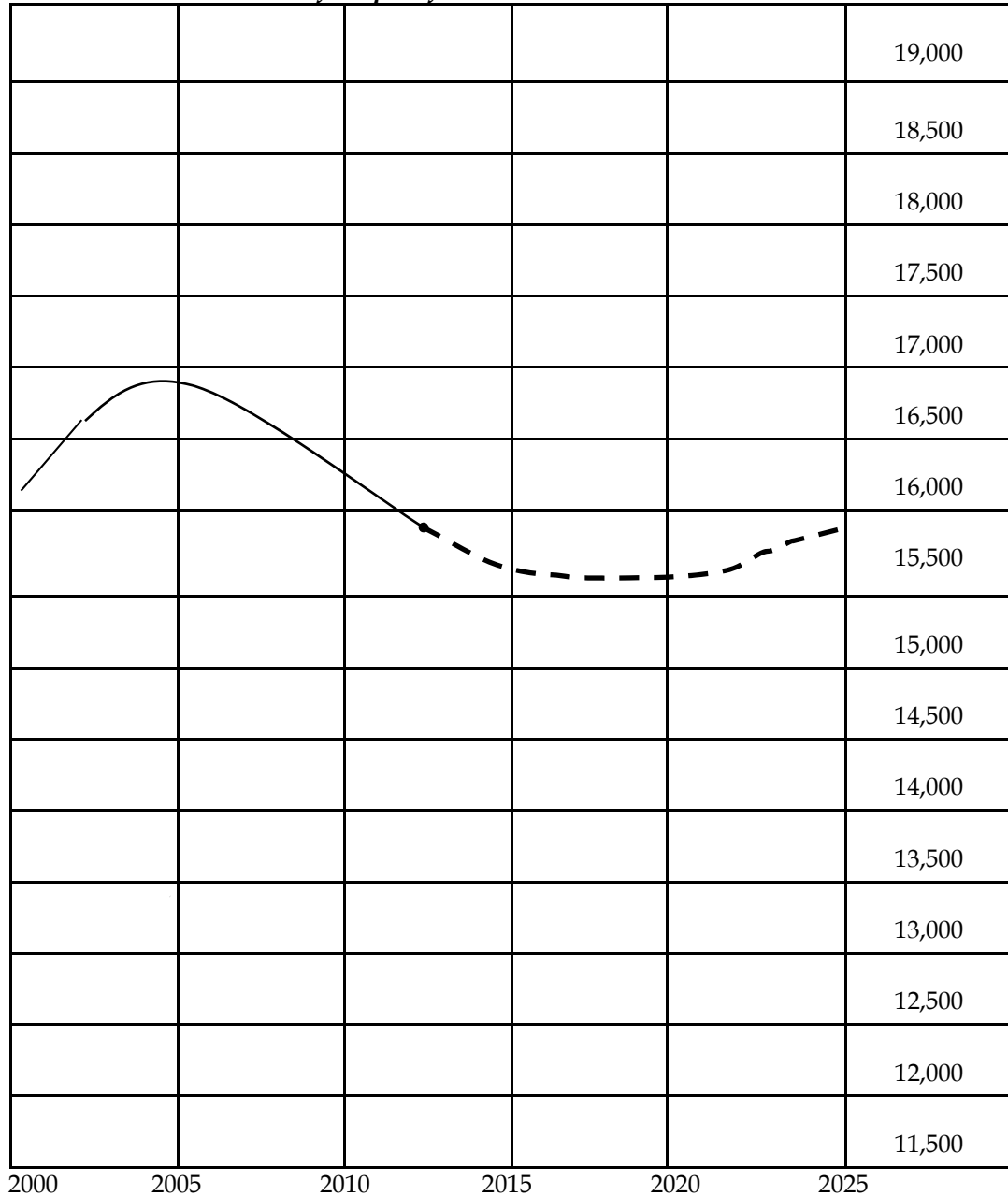


**ENROLLMENT PROJECTIONS**

Pages 36 through 61 present the actual and estimated enrollments of years 2014 through 2024. TABLE V below, presents graphically the actual and estimated enrollment of Calvert County Public Schools in the years noted.

**TABLE V**

*Number of Pupils for the Period 2000-2024*



KEY: ----- Projected      \_\_\_\_\_ Actual

**FTE ENROLLMENT PROJECTIONS BY GRADE**

**LEA** CALVERT **DATE** 24-March-14

**School** APPEAL ELEMENTARY SCHOOL

| Enrollments as of September 30TH |                |              |              |              |              |              |              |              |              |
|----------------------------------|----------------|--------------|--------------|--------------|--------------|--------------|--------------|--------------|--------------|
|                                  | 2013<br>Actual | 2014<br>Year | 2015<br>Year | 2016<br>Year | 2017<br>Year | 2018<br>Year | 2019<br>Year | 2020<br>Year | 2024<br>Year |
| PRE_K                            |                |              |              |              |              |              |              |              |              |
| KINDERGARTEN                     | 0              | 0            | 0            | 0            | 0            | 0            | 0            | 0            | 0            |
| 1st                              | 1              | 0            | 0            | 0            | 0            | 0            | 0            | 0            | 0            |
| 2nd                              | 2              | 0            | 0            | 0            | 0            | 0            | 0            | 0            | 0            |
| 3rd                              | 125            | 139          | 125          | 117          | 119          | 118          | 115          | 117          | 118          |
| 4th                              | 117            | 134          | 139          | 125          | 117          | 119          | 118          | 115          | 123          |
| 5th                              | 134            | 118          | 134          | 139          | 125          | 117          | 119          | 118          | 117          |
| 6th                              |                |              |              |              |              |              |              |              |              |
| 7th                              |                |              |              |              |              |              |              |              |              |
| 8th                              |                |              |              |              |              |              |              |              |              |
| 9th                              |                |              |              |              |              |              |              |              |              |
| 10th                             |                |              |              |              |              |              |              |              |              |
| 11th                             |                |              |              |              |              |              |              |              |              |
| 12th                             |                |              |              |              |              |              |              |              |              |
| SP ED                            |                |              |              |              |              |              |              |              |              |
| <b>TOTAL</b>                     | <b>379</b>     | <b>391</b>   | <b>398</b>   | <b>381</b>   | <b>361</b>   | <b>354</b>   | <b>352</b>   | <b>350</b>   | <b>358</b>   |

**FTE ENROLLMENT PROJECTIONS BY GRADE**

**LEA** CALVERT **DATE** 24-MARCH-14

**School** BARSTOW ELEMENTARY SCHOOL

| Enrollments as of September 30TH |                |                |                |                |                |                |                |                |                 |
|----------------------------------|----------------|----------------|----------------|----------------|----------------|----------------|----------------|----------------|-----------------|
|                                  | 2013<br>Actual | 2014<br>Year 1 | 2015<br>Year 2 | 2016<br>Year 3 | 2017<br>year 4 | 2018<br>Year 5 | 2019<br>Year 6 | 2020<br>Year 7 | 2024<br>Year 10 |
| PRE_K                            |                |                |                |                |                |                |                |                |                 |
| KINDERGARTEN                     | 82             | 81             | 86             | 91             | 93             | 94             | 95             | 96             | 98              |
| 1st                              | 102            | 89             | 83             | 89             | 94             | 94             | 95             | 96             | 99              |
| 2nd                              | 84             | 116            | 96             | 90             | 96             | 101            | 100            | 101            | 105             |
| 3rd                              | 93             | 85             | 115            | 96             | 90             | 94             | 98             | 98             | 106             |
| 4th                              | 77             | 98             | 87             | 117            | 98             | 90             | 95             | 99             | 98              |
| 5th                              | 91             | 73             | 96             | 86             | 115            | 94             | 87             | 92             | 98              |
| 6th                              |                |                |                |                |                |                |                |                |                 |
| 7th                              |                |                |                |                |                |                |                |                |                 |
| 8th                              |                |                |                |                |                |                |                |                |                 |
| 9th                              |                |                |                |                |                |                |                |                |                 |
| 10th                             |                |                |                |                |                |                |                |                |                 |
| 11th                             |                |                |                |                |                |                |                |                |                 |
| 12th                             |                |                |                |                |                |                |                |                |                 |
| SP ED                            |                |                |                |                |                |                |                |                |                 |
| <b>TOTAL</b>                     | <b>529</b>     | <b>544</b>     | <b>564</b>     | <b>568</b>     | <b>586</b>     | <b>568</b>     | <b>570</b>     | <b>582</b>     | <b>604</b>      |



**FTE ENROLLMENT PROJECTIONS BY GRADE**

LEA CALVERT DATE 24-MARCH-14

School BEACH ELEMENTARY SCHOOL

| Enrollments as of September 30TH |                |                |                |                |                |                |                |                |                 |
|----------------------------------|----------------|----------------|----------------|----------------|----------------|----------------|----------------|----------------|-----------------|
|                                  | 2013<br>Actual | 2014<br>Year 1 | 2015<br>Year 2 | 2016<br>Year 3 | 2017<br>year 4 | 2018<br>Year 5 | 2019<br>Year 6 | 2020<br>Year 7 | 2024<br>Year 10 |
| PRE_K                            |                |                |                |                |                |                |                |                |                 |
| KINDERGARTEN                     | 94             | 81             | 80             | 81             | 83             | 83             | 84             | 85             | 87              |
| 1st                              | 127            | 70             | 85             | 86             | 85             | 87             | 87             | 88             | 90              |
| 2nd                              | 104            | 99             | 72             | 89             | 88             | 87             | 88             | 89             | 92              |
| 3rd                              | 88             | 83             | 104            | 75             | 92             | 91             | 89             | 91             | 96              |
| 4th                              | 118            | 70             | 89             | 111            | 81             | 98             | 96             | 94             | 98              |
| 5th                              | 94             | 91             | 78             | 101            | 124            | 90             | 109            | 107            | 113             |
| 6th                              |                |                |                |                |                |                |                |                |                 |
| 7th                              |                |                |                |                |                |                |                |                |                 |
| 8th                              |                |                |                |                |                |                |                |                |                 |
| 9th                              |                |                |                |                |                |                |                |                |                 |
| 10th                             |                |                |                |                |                |                |                |                |                 |
| 11th                             |                |                |                |                |                |                |                |                |                 |
| 12th                             |                |                |                |                |                |                |                |                |                 |
| SP ED                            |                |                |                |                |                |                |                |                |                 |
| <b>TOTAL</b>                     | <b>625</b>     | <b>494</b>     | <b>509</b>     | <b>543</b>     | <b>552</b>     | <b>536</b>     | <b>555</b>     | <b>554</b>     | <b>576</b>      |

## FTE ENROLLMENT PROJECTIONS BY GRADE

LEA CALVERT DATE 24-MARCH-14

School CALVERT ELEMENTARY SCHOOL

| Enrollments as of September 30TH |                |                |                |                |                |                |                |                |                 |
|----------------------------------|----------------|----------------|----------------|----------------|----------------|----------------|----------------|----------------|-----------------|
|                                  | 2013<br>Actual | 2014<br>Year 1 | 2015<br>Year 2 | 2016<br>Year 3 | 2017<br>year 4 | 2018<br>Year 5 | 2019<br>Year 6 | 2020<br>Year 7 | 2024<br>Year 10 |
| PRE_K                            |                |                |                |                |                |                |                |                |                 |
| KINDERGARTEN                     | 70             | 69             | 69             | 69             | 71             | 71             | 72             | 73             | 74              |
| 1st                              | 63             | 78             | 76             | 75             | 75             | 77             | 78             | 79             | 81              |
| 2nd                              | 82             | 63             | 81             | 79             | 77             | 77             | 79             | 80             | 83              |
| 3rd                              | 85             | 83             | 63             | 81             | 78             | 76             | 76             | 78             | 80              |
| 4th                              | 71             | 86             | 82             | 62             | 80             | 77             | 75             | 75             | 81              |
| 5th                              | 86             | 71             | 87             | 83             | 63             | 81             | 78             | 76             | 83              |
| 6th                              |                |                |                |                |                |                |                |                |                 |
| 7th                              |                |                |                |                |                |                |                |                |                 |
| 8th                              |                |                |                |                |                |                |                |                |                 |
| 9th                              |                |                |                |                |                |                |                |                |                 |
| 10th                             |                |                |                |                |                |                |                |                |                 |
| 11th                             |                |                |                |                |                |                |                |                |                 |
| 12th                             |                |                |                |                |                |                |                |                |                 |
| SP ED                            |                |                |                |                |                |                |                |                |                 |
| <b>TOTAL</b>                     | <b>457</b>     | <b>452</b>     | <b>460</b>     | <b>449</b>     | <b>444</b>     | <b>459</b>     | <b>458</b>     | <b>461</b>     | <b>482</b>      |

**IAC/PSCP FORM 101.2  
R3/11**

## FTE ENROLLMENT PROJECTIONS BY GRADE

LEA CALVERT DATE 24-MARCH-14

---

School DOWELL ELEMENTARY SCHOOL

---

| Enrollments as of September 30TH |                |                |                |                |                |                |                |                |                 |
|----------------------------------|----------------|----------------|----------------|----------------|----------------|----------------|----------------|----------------|-----------------|
|                                  | 2013<br>Actual | 2014<br>Year 1 | 2015<br>Year 2 | 2016<br>Year 3 | 2017<br>year 4 | 2018<br>Year 5 | 2019<br>Year 6 | 2020<br>Year 7 | 2024<br>Year 10 |
| PRE_K                            |                |                |                |                |                |                |                |                |                 |
| KINDERGARTEN                     | 92             | 91             | 86             | 86             | 88             | 89             | 90             | 91             | 93              |
| 1st                              | 96             | 103            | 101            | 95             | 95             | 98             | 99             | 100            | 103             |
| 2nd                              | 102            | 95             | 110            | 108            | 102            | 102            | 105            | 106            | 109             |
| 3rd                              | 114            | 100            | 94             | 109            | 107            | 101            | 101            | 104            | 105             |
| 4th                              | 102            | 112            | 100            | 94             | 109            | 107            | 101            | 101            | 102             |
| 5th                              | 108            | 104            | 110            | 99             | 93             | 107            | 105            | 100            | 106             |
| 6th                              |                |                |                |                |                |                |                |                |                 |
| 7th                              |                |                |                |                |                |                |                |                |                 |
| 8th                              |                |                |                |                |                |                |                |                |                 |
| 9th                              |                |                |                |                |                |                |                |                |                 |
| 10th                             |                |                |                |                |                |                |                |                |                 |
| 11th                             |                |                |                |                |                |                |                |                |                 |
| 12th                             |                |                |                |                |                |                |                |                |                 |
| SP ED                            |                |                |                |                |                |                |                |                |                 |
| <b>TOTAL</b>                     | <b>614</b>     | <b>605</b>     | <b>601</b>     | <b>591</b>     | <b>594</b>     | <b>604</b>     | <b>601</b>     | <b>602</b>     | <b>618</b>      |

**IAC/PSCP FORM 101.2  
R3/11**

# FTE ENROLLMENT PROJECTIONS BY GRADE

LEA CALVERT DATE 24-MARCH-14

School HUNTINGTOWN ELEMENTARY SCHOOL

| Enrollments as of September 30TH |                |                |                |                |                |                |                |                |                 |
|----------------------------------|----------------|----------------|----------------|----------------|----------------|----------------|----------------|----------------|-----------------|
|                                  | 2013<br>Actual | 2014<br>Year 1 | 2015<br>Year 2 | 2016<br>Year 3 | 2017<br>year 4 | 2018<br>Year 5 | 2019<br>Year 6 | 2020<br>Year 7 | 2024<br>Year 10 |
| PRE_K                            |                |                |                |                |                |                |                |                |                 |
| KINDERGARTEN                     | 68             | 67             | 62             | 62             | 64             | 64             | 65             | 66             | 67              |
| 1st                              | 85             | 77             | 69             | 64             | 64             | 65             | 66             | 67             | 69              |
| 2nd                              | 79             | 90             | 82             | 73             | 68             | 68             | 69             | 70             | 72              |
| 3rd                              | 78             | 80             | 93             | 85             | 76             | 70             | 70             | 72             | 73              |
| 4th                              | 97             | 83             | 81             | 95             | 86             | 77             | 71             | 71             | 74              |
| 5th                              | 106            | 104            | 84             | 82             | 97             | 87             | 78             | 72             | 78              |
| 6th                              |                |                |                |                |                |                |                |                |                 |
| 7th                              |                |                |                |                |                |                |                |                |                 |
| 8th                              |                |                |                |                |                |                |                |                |                 |
| 9th                              |                |                |                |                |                |                |                |                |                 |
| 10th                             |                |                |                |                |                |                |                |                |                 |
| 11th                             |                |                |                |                |                |                |                |                |                 |
| 12th                             |                |                |                |                |                |                |                |                |                 |
| SP ED                            |                |                |                |                |                |                |                |                |                 |
| <b>TOTAL</b>                     | <b>513</b>     | <b>501</b>     | <b>471</b>     | <b>461</b>     | <b>455</b>     | <b>431</b>     | <b>419</b>     | <b>418</b>     | <b>433</b>      |

IAC/PSCP FORM 101.2  
R3/11

## FTE ENROLLMENT PROJECTIONS BY GRADE

LEA CALVERT DATE 24-MARCH-14

School MT. HARMONY ELEMENTARY SCHOOL

| Enrollments as of September 30TH |                |                |                |                |                |                |                |                |                 |
|----------------------------------|----------------|----------------|----------------|----------------|----------------|----------------|----------------|----------------|-----------------|
|                                  | 2013<br>Actual | 2014<br>Year 1 | 2015<br>Year 2 | 2016<br>Year 3 | 2017<br>year 4 | 2018<br>Year 5 | 2019<br>Year 6 | 2020<br>Year 7 | 2024<br>Year 10 |
| PRE_K                            |                |                |                |                |                |                |                |                |                 |
| KINDERGARTEN                     | 89             | 88             | 88             | 88             | 90             | 91             | 92             | 93             | 95              |
| 1st                              | 84             | 92             | 99             | 98             | 99             | 101            | 102            | 103            | 106             |
| 2nd                              | 80             | 86             | 92             | 99             | 98             | 99             | 101            | 102            | 106             |
| 3rd                              | 85             | 77             | 87             | 93             | 100            | 99             | 100            | 102            | 107             |
| 4th                              | 104            | 86             | 82             | 93             | 99             | 107            | 106            | 107            | 116             |
| 5th                              | 111            | 104            | 88             | 84             | 96             | 102            | 110            | 109            | 111             |
| 6th                              |                |                |                |                |                |                |                |                |                 |
| 7th                              |                |                |                |                |                |                |                |                |                 |
| 8th                              |                |                |                |                |                |                |                |                |                 |
| 9th                              |                |                |                |                |                |                |                |                |                 |
| 10th                             |                |                |                |                |                |                |                |                |                 |
| 11th                             |                |                |                |                |                |                |                |                |                 |
| 12th                             |                |                |                |                |                |                |                |                |                 |
| SP ED                            |                |                |                |                |                |                |                |                |                 |
| <b>TOTAL</b>                     | <b>553</b>     | <b>533</b>     | <b>536</b>     | <b>555</b>     | <b>582</b>     | <b>599</b>     | <b>611</b>     | <b>616</b>     | <b>641</b>      |

**IAC/PSCP FORM 101.2  
R3/11**

## FTE ENROLLMENT PROJECTIONS BY GRADE

LEA CALVERT DATE 24-MARCH-14

---

School MUTUAL ELEMENTARY SCHOOL

---

| Enrollments as of September 30TH |                |                |                |                |                |                |                |                |                 |
|----------------------------------|----------------|----------------|----------------|----------------|----------------|----------------|----------------|----------------|-----------------|
|                                  | 2013<br>Actual | 2014<br>Year 1 | 2015<br>Year 2 | 2016<br>Year 3 | 2017<br>year 4 | 2018<br>Year 5 | 2019<br>Year 6 | 2020<br>Year 7 | 2024<br>Year 10 |
| PRE_K                            |                |                |                |                |                |                |                |                |                 |
| KINDERGARTEN                     | 55             | 55             | 54             | 54             | 56             | 56             | 57             | 57             | 58              |
| 1st                              | 63             | 55             | 55             | 54             | 54             | 56             | 56             | 57             | 58              |
| 2nd                              | 65             | 65             | 57             | 57             | 56             | 56             | 58             | 58             | 60              |
| 3rd                              | 83             | 68             | 71             | 63             | 63             | 62             | 62             | 64             | 65              |
| 4th                              | 78             | 80             | 64             | 67             | 59             | 59             | 58             | 58             | 62              |
| 5th                              | 80             | 79             | 83             | 66             | 69             | 61             | 61             | 60             | 61              |
| 6th                              |                |                |                |                |                |                |                |                |                 |
| 7th                              |                |                |                |                |                |                |                |                |                 |
| 8th                              |                |                |                |                |                |                |                |                |                 |
| 9th                              |                |                |                |                |                |                |                |                |                 |
| 10th                             |                |                |                |                |                |                |                |                |                 |
| 11th                             |                |                |                |                |                |                |                |                |                 |
| 12th                             |                |                |                |                |                |                |                |                |                 |
| SP ED                            |                |                |                |                |                |                |                |                |                 |
| <b>TOTAL</b>                     | <b>424</b>     | <b>402</b>     | <b>384</b>     | <b>361</b>     | <b>357</b>     | <b>350</b>     | <b>352</b>     | <b>354</b>     | <b>364</b>      |

**IAC/PSCP FORM 101.2  
R3/11**

## FTE ENROLLMENT PROJECTIONS BY GRADE

LEA CALVERT DATE 24-MARCH-14

School PATUXENT ELEMENTARY SCHOOL

| Enrollments as of September 30TH |                |                |                |                |                |                |                |                |                 |
|----------------------------------|----------------|----------------|----------------|----------------|----------------|----------------|----------------|----------------|-----------------|
|                                  | 2013<br>Actual | 2014<br>Year 1 | 2015<br>Year 2 | 2016<br>Year 3 | 2017<br>year 4 | 2018<br>Year 5 | 2019<br>Year 6 | 2020<br>Year 7 | 2024<br>Year 10 |
| PRE_K                            |                |                |                |                |                |                |                |                |                 |
| KINDERGARTEN                     | 131            | 130            | 129            | 125            | 128            | 129            | 131            | 132            | 135             |
| 1st                              | 128            | 126            | 128            | 127            | 123            | 126            | 127            | 129            | 133             |
| 2nd                              | 140            | 125            | 117            | 119            | 118            | 115            | 117            | 118            | 123             |
| 3rd                              | 0              | 0              | 0              | 0              | 0              | 0              | 0              | 0              | 0               |
| 4th                              | 0              | 0              | 0              | 0              | 0              | 0              | 0              | 0              | 0               |
| 5th                              | 0              | 0              | 0              | 0              | 0              | 0              | 0              | 0              | 0               |
| 6th                              |                |                |                |                |                |                |                |                |                 |
| 7th                              |                |                |                |                |                |                |                |                |                 |
| 8th                              |                |                |                |                |                |                |                |                |                 |
| 9th                              |                |                |                |                |                |                |                |                |                 |
| 10th                             |                |                |                |                |                |                |                |                |                 |
| 11th                             |                |                |                |                |                |                |                |                |                 |
| 12th                             |                |                |                |                |                |                |                |                |                 |
| SP ED                            |                |                |                |                |                |                |                |                |                 |
| <b>TOTAL</b>                     | <b>399</b>     | <b>381</b>     | <b>374</b>     | <b>371</b>     | <b>369</b>     | <b>370</b>     | <b>375</b>     | <b>379</b>     | <b>391</b>      |

**IAC/PSCP FORM 101.2  
R3/11**

## FTE ENROLLMENT PROJECTIONS BY GRADE

LEA CALVERT DATE 24-MARCH-14

---

School PLUM POINT ELEMENTARY SCHOOL

---

| Enrollments as of September 30TH |                |                |                |                |                |                |                |                |                 |
|----------------------------------|----------------|----------------|----------------|----------------|----------------|----------------|----------------|----------------|-----------------|
|                                  | 2013<br>Actual | 2014<br>Year 1 | 2015<br>Year 2 | 2016<br>Year 3 | 2017<br>year 4 | 2018<br>Year 5 | 2019<br>Year 6 | 2020<br>Year 7 | 2024<br>Year 10 |
| PRE_K                            |                |                |                |                |                |                |                |                |                 |
| KINDERGARTEN                     | 56             | 65             | 65             | 65             | 66             | 67             | 68             | 68             | 70              |
| 1st                              | 71             | 85             | 68             | 68             | 68             | 70             | 70             | 71             | 73              |
| 2nd                              | 67             | 91             | 87             | 70             | 69             | 69             | 71             | 72             | 74              |
| 3rd                              | 66             | 88             | 101            | 96             | 77             | 76             | 76             | 78             | 83              |
| 4th                              | 91             | 88             | 92             | 105            | 100            | 80             | 79             | 79             | 87              |
| 5th                              | 96             | 116            | 90             | 95             | 108            | 103            | 82             | 81             | 82              |
| 6th                              |                |                |                |                |                |                |                |                |                 |
| 7th                              |                |                |                |                |                |                |                |                |                 |
| 8th                              |                |                |                |                |                |                |                |                |                 |
| 9th                              |                |                |                |                |                |                |                |                |                 |
| 10th                             |                |                |                |                |                |                |                |                |                 |
| 11th                             |                |                |                |                |                |                |                |                |                 |
| 12th                             |                |                |                |                |                |                |                |                |                 |
| SP ED                            |                |                |                |                |                |                |                |                |                 |
| <b>TOTAL</b>                     | <b>447</b>     | <b>533</b>     | <b>504</b>     | <b>498</b>     | <b>488</b>     | <b>464</b>     | <b>446</b>     | <b>449</b>     | <b>469</b>      |

**IAC/PSCP FORM 101.2  
R3/11**



# FTE ENROLLMENT PROJECTIONS BY GRADE

LEA CALVERT DATE 24-MARCH-14

School ST. LEONARD ELEMENTARY SCHOOL

| Enrollments as of September 30TH |                |                |                |                |                |                |                |                |                 |
|----------------------------------|----------------|----------------|----------------|----------------|----------------|----------------|----------------|----------------|-----------------|
|                                  | 2013<br>Actual | 2014<br>Year 1 | 2015<br>Year 2 | 2016<br>Year 3 | 2017<br>year 4 | 2018<br>Year 5 | 2019<br>Year 6 | 2020<br>Year 7 | 2024<br>Year 10 |
| PRE_K                            |                |                |                |                |                |                |                |                |                 |
| KINDERGARTEN                     | 95             | 94             | 90             | 85             | 87             | 88             | 89             | 90             | 92              |
| 1st                              | 77             | 78             | 88             | 84             | 79             | 81             | 82             | 82             | 85              |
| 2nd                              | 65             | 70             | 75             | 85             | 81             | 76             | 78             | 79             | 82              |
| 3rd                              | 94             | 68             | 73             | 78             | 89             | 85             | 79             | 81             | 92              |
| 4th                              | 70             | 86             | 67             | 71             | 76             | 87             | 83             | 77             | 84              |
| 5th                              | 98             | 70             | 89             | 69             | 73             | 79             | 90             | 86             | 82              |
| 6th                              |                |                |                |                |                |                |                |                |                 |
| 7th                              |                |                |                |                |                |                |                |                |                 |
| 8th                              |                |                |                |                |                |                |                |                |                 |
| 9th                              |                |                |                |                |                |                |                |                |                 |
| 10th                             |                |                |                |                |                |                |                |                |                 |
| 11th                             |                |                |                |                |                |                |                |                |                 |
| 12th                             |                |                |                |                |                |                |                |                |                 |
| SP ED                            |                |                |                |                |                |                |                |                |                 |
| <b>TOTAL</b>                     | <b>499</b>     | <b>466</b>     | <b>482</b>     | <b>472</b>     | <b>485</b>     | <b>496</b>     | <b>501</b>     | <b>495</b>     | <b>517</b>      |

IAC/PSCP FORM 101.2  
R3/11

## FTE ENROLLMENT PROJECTIONS BY GRADE

LEA CALVERT DATE 24-MARCH-14

School SUNDERLAND ELEMENTARY SCHOOL

| Enrollments as of September 30TH |                |                |                |                |                |                |                |                |                 |
|----------------------------------|----------------|----------------|----------------|----------------|----------------|----------------|----------------|----------------|-----------------|
|                                  | 2013<br>Actual | 2014<br>Year 1 | 2015<br>Year 2 | 2016<br>Year 3 | 2017<br>year 4 | 2018<br>Year 5 | 2019<br>Year 6 | 2020<br>Year 7 | 2024<br>Year 10 |
| PRE_K                            |                |                |                |                |                |                |                |                |                 |
| KINDERGARTEN                     | 104            | 103            | 102            | 103            | 105            | 106            | 107            | 108            | 111             |
| 1st                              | 110            | 108            | 111            | 110            | 111            | 113            | 114            | 116            | 119             |
| 2nd                              | 108            | 115            | 110            | 113            | 112            | 113            | 115            | 116            | 121             |
| 3rd                              | 117            | 113            | 114            | 109            | 112            | 111            | 112            | 114            | 119             |
| 4th                              | 108            | 120            | 114            | 115            | 110            | 113            | 112            | 113            | 122             |
| 5th                              | 112            | 116            | 128            | 121            | 122            | 117            | 120            | 119            | 129             |
| 6th                              |                |                |                |                |                |                |                |                |                 |
| 7th                              |                |                |                |                |                |                |                |                |                 |
| 8th                              |                |                |                |                |                |                |                |                |                 |
| 9th                              |                |                |                |                |                |                |                |                |                 |
| 10th                             |                |                |                |                |                |                |                |                |                 |
| 11th                             |                |                |                |                |                |                |                |                |                 |
| 12th                             |                |                |                |                |                |                |                |                |                 |
| SP ED                            |                |                |                |                |                |                |                |                |                 |
| TOTAL                            | 659            | 675            | 679            | 671            | 672            | 673            | 680            | 686            | 721             |

IAC/PSCP FORM 101.2  
R3/11

## FTE ENROLLMENT PROJECTIONS BY GRADE

LEA CALVERT DATE 24-MARCH-14

---

School WINDY HILL ELEMENTARY SCHOOL

---

| Enrollments as of September 30TH |                |                |                |                |                |                |                |                |                 |
|----------------------------------|----------------|----------------|----------------|----------------|----------------|----------------|----------------|----------------|-----------------|
|                                  | 2013<br>Actual | 2014<br>Year 1 | 2015<br>Year 2 | 2016<br>Year 3 | 2017<br>year 4 | 2018<br>Year 5 | 2019<br>Year 6 | 2020<br>Year 7 | 2024<br>Year 10 |
| PRE_K                            |                |                |                |                |                |                |                |                |                 |
| KINDERGARTEN                     | 116            | 118            | 117            | 117            | 120            | 121            | 123            | 124            | 126             |
| 1st                              | 95             | 116            | 107            | 106            | 106            | 109            | 110            | 111            | 114             |
| 2nd                              | 96             | 107            | 117            | 108            | 107            | 107            | 110            | 111            | 115             |
| 3rd                              | 86             | 105            | 112            | 123            | 113            | 112            | 112            | 115            | 123             |
| 4th                              | 118            | 93             | 105            | 112            | 122            | 113            | 112            | 112            | 122             |
| 5th                              | 115            | 127            | 90             | 102            | 109            | 118            | 109            | 109            | 110             |
| 6th                              |                |                |                |                |                |                |                |                |                 |
| 7th                              |                |                |                |                |                |                |                |                |                 |
| 8th                              |                |                |                |                |                |                |                |                |                 |
| 9th                              |                |                |                |                |                |                |                |                |                 |
| 10th                             |                |                |                |                |                |                |                |                |                 |
| 11th                             |                |                |                |                |                |                |                |                |                 |
| 12th                             |                |                |                |                |                |                |                |                |                 |
| SP ED                            |                |                |                |                |                |                |                |                |                 |
| <b>TOTAL</b>                     | <b>626</b>     | <b>666</b>     | <b>648</b>     | <b>668</b>     | <b>677</b>     | <b>680</b>     | <b>676</b>     | <b>682</b>     | <b>710</b>      |

**IAC/PSCP FORM 101.2  
R3/11**

# FTE ENROLLMENT PROJECTIONS BY GRADE

LEA CALVERT DATE 24-MARCH-14

School CALVERT MIDDLE SCHOOL

| Enrollments as of September 30TH |                |                |                |                |                |                |                |                |                 |
|----------------------------------|----------------|----------------|----------------|----------------|----------------|----------------|----------------|----------------|-----------------|
|                                  | 2013<br>Actual | 2014<br>Year 1 | 2015<br>Year 2 | 2016<br>Year 3 | 2017<br>year 4 | 2018<br>Year 5 | 2019<br>Year 6 | 2020<br>Year 7 | 2024<br>Year 10 |
| PRE_K                            |                |                |                |                |                |                |                |                |                 |
| KINDERGARTEN                     |                |                |                |                |                |                |                |                |                 |
| 1st                              |                |                |                |                |                |                |                |                |                 |
| 2nd                              |                |                |                |                |                |                |                |                |                 |
| 3rd                              |                |                |                |                |                |                |                |                |                 |
| 4th                              |                |                |                |                |                |                |                |                |                 |
| 5th                              |                |                |                |                |                |                |                |                |                 |
| 6th                              | 190            | 193            | 184            | 182            | 178            | 190            | 184            | 182            | 191             |
| 7th                              | 204            | 193            | 201            | 192            | 191            | 186            | 198            | 191            | 192             |
| 8th                              | 204            | 206            | 197            | 206            | 197            | 196            | 190            | 202            | 190             |
| 9th                              |                |                |                |                |                |                |                |                |                 |
| 10th                             |                |                |                |                |                |                |                |                |                 |
| 11th                             |                |                |                |                |                |                |                |                |                 |
| 12th                             |                |                |                |                |                |                |                |                |                 |
| SP ED                            |                |                |                |                |                |                |                |                |                 |
| <b>TOTAL</b>                     | <b>598</b>     | <b>592</b>     | <b>582</b>     | <b>580</b>     | <b>566</b>     | <b>572</b>     | <b>572</b>     | <b>575</b>     | <b>573</b>      |

IAC/PSCP FORM 101.2  
R3/11

# FTE ENROLLMENT PROJECTIONS BY GRADE

LEA CALVERT DATE 24-MARCH-14

School MILL CREEK MIDDLE SCHOOL

| Enrollments as of September 30TH |                |                |                |                |                |                |                |                |                 |
|----------------------------------|----------------|----------------|----------------|----------------|----------------|----------------|----------------|----------------|-----------------|
|                                  | 2013<br>Actual | 2014<br>Year 1 | 2015<br>Year 2 | 2016<br>Year 3 | 2017<br>year 4 | 2018<br>Year 5 | 2019<br>Year 6 | 2020<br>Year 7 | 2024<br>Year 10 |
| PRE_K                            |                |                |                |                |                |                |                |                |                 |
| KINDERGARTEN                     |                |                |                |                |                |                |                |                |                 |
| 1st                              |                |                |                |                |                |                |                |                |                 |
| 2nd                              |                |                |                |                |                |                |                |                |                 |
| 3rd                              |                |                |                |                |                |                |                |                |                 |
| 4th                              |                |                |                |                |                |                |                |                |                 |
| 5th                              |                |                |                |                |                |                |                |                |                 |
| 6th                              | 190            | 193            | 184            | 181            | 177            | 188            | 182            | 180            | 189             |
| 7th                              | 194            | 199            | 199            | 190            | 188            | 183            | 194            | 188            | 189             |
| 8th                              | 154            | 193            | 202            | 202            | 194            | 191            | 186            | 197            | 185             |
| 9th                              |                |                |                |                |                |                |                |                |                 |
| 10th                             |                |                |                |                |                |                |                |                |                 |
| 11th                             |                |                |                |                |                |                |                |                |                 |
| 12th                             |                |                |                |                |                |                |                |                |                 |
| SP ED                            |                |                |                |                |                |                |                |                |                 |
| <b>TOTAL</b>                     | <b>538</b>     | <b>585</b>     | <b>585</b>     | <b>573</b>     | <b>559</b>     | <b>562</b>     | <b>562</b>     | <b>565</b>     | <b>563</b>      |

188

197IAC/PSCP FORM 101.2

R3/11

# FTE ENROLLMENT PROJECTIONS BY GRADE

LEA CALVERT DATE 24-MARCH-14

School NORTHERN MIDDLE SCHOOL

| Enrollments as of September 30TH |                |                |                |                |                |                |                |                |                 |
|----------------------------------|----------------|----------------|----------------|----------------|----------------|----------------|----------------|----------------|-----------------|
|                                  | 2013<br>Actual | 2014<br>Year 1 | 2015<br>Year 2 | 2016<br>Year 3 | 2017<br>year 4 | 2018<br>Year 5 | 2019<br>Year 6 | 2020<br>Year 7 | 2024<br>Year 10 |
| PRE_K                            |                |                |                |                |                |                |                |                |                 |
| KINDERGARTEN                     |                |                |                |                |                |                |                |                |                 |
| 1st                              |                |                |                |                |                |                |                |                |                 |
| 2nd                              |                |                |                |                |                |                |                |                |                 |
| 3rd                              |                |                |                |                |                |                |                |                |                 |
| 4th                              |                |                |                |                |                |                |                |                |                 |
| 5th                              |                |                |                |                |                |                |                |                |                 |
| 6th                              | 197            | 200            | 190            | 188            | 183            | 194            | 188            | 186            | 195             |
| 7th                              | 230            | 199            | 206            | 196            | 193            | 188            | 199            | 193            | 194             |
| 8th                              | 256            | 234            | 200            | 207            | 197            | 194            | 189            | 200            | 188             |
| 9th                              |                |                |                |                |                |                |                |                |                 |
| 10th                             |                |                |                |                |                |                |                |                |                 |
| 11th                             |                |                |                |                |                |                |                |                |                 |
| 12th                             |                |                |                |                |                |                |                |                |                 |
| SP ED                            |                |                |                |                |                |                |                |                |                 |
| TOTAL                            | 683            | 633            | 596            | 591            | 573            | 576            | 576            | 579            | 577             |

IAC/PSCP FORM 101.2  
R3/11

# FTE ENROLLMENT PROJECTIONS BY GRADE

LEA CALVERT DATE 24-MARCH-14

School PLUM POINT MIDDLE SCHOOL

| Enrollments as of September 30TH |                |                |                |                |                |                |                |                |                 |
|----------------------------------|----------------|----------------|----------------|----------------|----------------|----------------|----------------|----------------|-----------------|
|                                  | 2013<br>Actual | 2014<br>Year 1 | 2015<br>Year 2 | 2016<br>Year 3 | 2017<br>year 4 | 2018<br>Year 5 | 2019<br>Year 6 | 2020<br>Year 7 | 2024<br>Year 10 |
| PRE_K                            |                |                |                |                |                |                |                |                |                 |
| KINDERGARTEN                     |                |                |                |                |                |                |                |                |                 |
| 1st                              |                |                |                |                |                |                |                |                |                 |
| 2nd                              |                |                |                |                |                |                |                |                |                 |
| 3rd                              |                |                |                |                |                |                |                |                |                 |
| 4th                              |                |                |                |                |                |                |                |                |                 |
| 5th                              |                |                |                |                |                |                |                |                |                 |
| 6th                              | 237            | 242            | 231            | 228            | 222            | 236            | 228            | 226            | 237             |
| 7th                              | 220            | 241            | 246            | 235            | 232            | 226            | 239            | 232            | 233             |
| 8th                              | 239            | 231            | 249            | 253            | 241            | 238            | 232            | 245            | 231             |
| 9th                              |                |                |                |                |                |                |                |                |                 |
| 10th                             |                |                |                |                |                |                |                |                |                 |
| 11th                             |                |                |                |                |                |                |                |                |                 |
| 12th                             |                |                |                |                |                |                |                |                |                 |
| SP ED                            |                |                |                |                |                |                |                |                |                 |
| <b>TOTAL</b>                     | <b>696</b>     | <b>714</b>     | <b>727</b>     | <b>716</b>     | <b>695</b>     | <b>700</b>     | <b>699</b>     | <b>703</b>     | <b>701</b>      |

IAC/PSCP FORM 101.2  
R3/11

# FTE ENROLLMENT PROJECTIONS BY GRADE

LEA CALVERT DATE 24-MARCH-14

School SOUTHERN MIDDLE SCHOOL

| Enrollments as of September 30TH |                |                |                |                |                |                |                |                |                 |
|----------------------------------|----------------|----------------|----------------|----------------|----------------|----------------|----------------|----------------|-----------------|
|                                  | 2013<br>Actual | 2014<br>Year 1 | 2015<br>Year 2 | 2016<br>Year 3 | 2017<br>year 4 | 2018<br>Year 5 | 2019<br>Year 6 | 2020<br>Year 7 | 2024<br>Year 10 |
| PRE_K                            |                |                |                |                |                |                |                |                |                 |
| KINDERGARTEN                     |                |                |                |                |                |                |                |                |                 |
| 1st                              |                |                |                |                |                |                |                |                |                 |
| 2nd                              |                |                |                |                |                |                |                |                |                 |
| 3rd                              |                |                |                |                |                |                |                |                |                 |
| 4th                              |                |                |                |                |                |                |                |                |                 |
| 5th                              |                |                |                |                |                |                |                |                |                 |
| 6th                              | 185            | 188            | 179            | 177            | 172            | 182            | 176            | 175            | 183             |
| 7th                              | 155            | 179            | 176            | 168            | 166            | 161            | 171            | 165            | 166             |
| 8th                              | 186            | 154            | 174            | 171            | 163            | 161            | 156            | 166            | 155             |
| 9th                              |                |                |                |                |                |                |                |                |                 |
| 10th                             |                |                |                |                |                |                |                |                |                 |
| 11th                             |                |                |                |                |                |                |                |                |                 |
| 12th                             |                |                |                |                |                |                |                |                |                 |
| SP ED                            |                |                |                |                |                |                |                |                |                 |
| TOTAL                            | 526            | 521            | 529            | 516            | 501            | 504            | 503            | 506            | 504             |

IAC/PSCP FORM 101.2  
R3/11



# FTE ENROLLMENT PROJECTIONS BY GRADE

LEA CALVERT DATE 24-MARCH-14

School WINDY HILL MIDDLE SCHOOL

| Enrollments as of September 30TH |                |                |                |                |                |                |                |                |                 |
|----------------------------------|----------------|----------------|----------------|----------------|----------------|----------------|----------------|----------------|-----------------|
|                                  | 2013<br>Actual | 2014<br>Year 1 | 2015<br>Year 2 | 2016<br>Year 3 | 2017<br>year 4 | 2018<br>Year 5 | 2019<br>Year 6 | 2020<br>Year 7 | 2024<br>Year 10 |
| PRE_K                            |                |                |                |                |                |                |                |                |                 |
| KINDERGARTEN                     |                |                |                |                |                |                |                |                |                 |
| 1st                              |                |                |                |                |                |                |                |                |                 |
| 2nd                              |                |                |                |                |                |                |                |                |                 |
| 3rd                              |                |                |                |                |                |                |                |                |                 |
| 4th                              |                |                |                |                |                |                |                |                |                 |
| 5th                              |                |                |                |                |                |                |                |                |                 |
| 6th                              | 273            | 277            | 265            | 264            | 260            | 277            | 268            | 266            | 278             |
| 7th                              | 244            | 272            | 281            | 271            | 270            | 264            | 280            | 271            | 272             |
| 8th                              | 224            | 244            | 276            | 287            | 277            | 274            | 267            | 283            | 266             |
| 9th                              |                |                |                |                |                |                |                |                |                 |
| 10th                             |                |                |                |                |                |                |                |                |                 |
| 11th                             |                |                |                |                |                |                |                |                |                 |
| 12th                             |                |                |                |                |                |                |                |                |                 |
| SP ED                            |                |                |                |                |                |                |                |                |                 |
| <b>TOTAL</b>                     | <b>741</b>     | <b>793</b>     | <b>823</b>     | <b>822</b>     | <b>806</b>     | <b>815</b>     | <b>815</b>     | <b>820</b>     | <b>816</b>      |

IAC/PSCP FORM 101.2  
R3/11

## FTE ENROLLMENT PROJECTIONS BY GRADE

LEA CALVERT DATE 24-MARCH-14

School CALVERT HIGH SCHOOL

| Enrollments as of September 30TH |                |                |                |                |                |                |                |                |                 |
|----------------------------------|----------------|----------------|----------------|----------------|----------------|----------------|----------------|----------------|-----------------|
|                                  | 2013<br>Actual | 2014<br>Year 1 | 2015<br>Year 2 | 2016<br>Year 3 | 2017<br>year 4 | 2018<br>Year 5 | 2019<br>Year 6 | 2020<br>Year 7 | 2024<br>Year 10 |
| PRE_K                            |                |                |                |                |                |                |                |                |                 |
| KINDERGARTEN                     |                |                |                |                |                |                |                |                |                 |
| 1st                              |                |                |                |                |                |                |                |                |                 |
| 2nd                              |                |                |                |                |                |                |                |                |                 |
| 3rd                              |                |                |                |                |                |                |                |                |                 |
| 4th                              |                |                |                |                |                |                |                |                |                 |
| 5th                              |                |                |                |                |                |                |                |                |                 |
| 6th                              |                |                |                |                |                |                |                |                |                 |
| 7th                              |                |                |                |                |                |                |                |                |                 |
| 8th                              |                |                |                |                |                |                |                |                |                 |
| 9th                              | 294            | 292            | 292            | 300            | 308            | 296            | 295            | 286            | 287             |
| 10th                             | 291            | 283            | 280            | 280            | 289            | 297            | 285            | 283            | 279             |
| 11th                             | 289            | 281            | 268            | 265            | 266            | 275            | 283            | 270            | 267             |
| 12th                             | 298            | 300            | 288            | 275            | 273            | 274            | 283            | 290            | 281             |
| SP ED                            |                |                |                |                |                |                |                |                |                 |
| TOTAL                            | 1172           | 1156           | 1128           | 1120           | 1137           | 1144           | 1147           | 1129           | 1114            |

IAC/PSCP FORM 101.2  
R3/11

## FTE ENROLLMENT PROJECTIONS BY GRADE

LEA CALVERT DATE 24-MARCH-14

School HUNTINGTOWN HIGH SCHOOL

| Enrollments as of September 30TH |                |                |                |                |                |                |                |                |                 |
|----------------------------------|----------------|----------------|----------------|----------------|----------------|----------------|----------------|----------------|-----------------|
|                                  | 2013<br>Actual | 2014<br>Year 1 | 2015<br>Year 2 | 2016<br>Year 3 | 2017<br>year 4 | 2018<br>Year 5 | 2019<br>Year 6 | 2020<br>Year 7 | 2024<br>Year 10 |
| PRE_K                            |                |                |                |                |                |                |                |                |                 |
| KINDERGARTEN                     |                |                |                |                |                |                |                |                |                 |
| 1st                              |                |                |                |                |                |                |                |                |                 |
| 2nd                              |                |                |                |                |                |                |                |                |                 |
| 3rd                              |                |                |                |                |                |                |                |                |                 |
| 4th                              |                |                |                |                |                |                |                |                |                 |
| 5th                              |                |                |                |                |                |                |                |                |                 |
| 6th                              |                |                |                |                |                |                |                |                |                 |
| 7th                              |                |                |                |                |                |                |                |                |                 |
| 8th                              |                |                |                |                |                |                |                |                |                 |
| 9th                              | 353            | 351            | 351            | 361            | 368            | 352            | 348            | 339            | 339             |
| 10th                             | 375            | 347            | 348            | 347            | 357            | 365            | 349            | 345            | 341             |
| 11th                             | 370            | 373            | 343            | 344            | 343            | 353            | 361            | 345            | 341             |
| 12th                             | 415            | 372            | 370            | 341            | 342            | 341            | 351            | 359            | 354             |
| SP ED                            |                |                |                |                |                |                |                |                |                 |
| <b>TOTAL</b>                     | <b>1513</b>    | <b>1443</b>    | <b>1412</b>    | <b>1393</b>    | <b>1410</b>    | <b>1411</b>    | <b>1409</b>    | <b>1388</b>    | <b>1375</b>     |

**IAC/PSCP FORM 101.2  
R3/11**

## FTE ENROLLMENT PROJECTIONS BY GRADE

LEA CALVERT DATE 24-MARCH-14

School NORTHERN HIGH SCHOOL

| Enrollments as of September 30TH |                |                |                |                |                |                |                |                |                 |
|----------------------------------|----------------|----------------|----------------|----------------|----------------|----------------|----------------|----------------|-----------------|
|                                  | 2013<br>Actual | 2014<br>Year 1 | 2015<br>Year 2 | 2016<br>Year 3 | 2017<br>year 4 | 2018<br>Year 5 | 2019<br>Year 6 | 2020<br>Year 7 | 2024<br>Year 10 |
| PRE_K                            |                |                |                |                |                |                |                |                |                 |
| KINDERGARTEN                     |                |                |                |                |                |                |                |                |                 |
| 1st                              |                |                |                |                |                |                |                |                |                 |
| 2nd                              |                |                |                |                |                |                |                |                |                 |
| 3rd                              |                |                |                |                |                |                |                |                |                 |
| 4th                              |                |                |                |                |                |                |                |                |                 |
| 5th                              |                |                |                |                |                |                |                |                |                 |
| 6th                              |                |                |                |                |                |                |                |                |                 |
| 7th                              |                |                |                |                |                |                |                |                |                 |
| 8th                              |                |                |                |                |                |                |                |                |                 |
| 9th                              | 396            | 394            | 395            | 409            | 419            | 405            | 401            | 390            | 390             |
| 10th                             | 366            | 389            | 391            | 393            | 406            | 419            | 401            | 396            | 391             |
| 11th                             | 367            | 336            | 353            | 355            | 356            | 370            | 378            | 362            | 356             |
| 12th                             | 347            | 383            | 347            | 364            | 366            | 369            | 379            | 388            | 384             |
| SP ED                            |                |                |                |                |                |                |                |                |                 |
| TOTAL                            | 1476           | 1502           | 1486           | 1520           | 1547           | 1563           | 1559           | 1536           | 1521            |

IAC/PSCP FORM 101.2  
R3/11

# FTE ENROLLMENT PROJECTIONS BY GRADE

LEA CALVERT DATE 24-MARCH-14

School PATUXENT HIGH SCHOOL

| Enrollments as of September 30TH |                |                |                |                |                |                |                |                |                 |
|----------------------------------|----------------|----------------|----------------|----------------|----------------|----------------|----------------|----------------|-----------------|
|                                  | 2013<br>Actual | 2014<br>Year 1 | 2015<br>Year 2 | 2016<br>Year 3 | 2017<br>year 4 | 2018<br>Year 5 | 2019<br>Year 6 | 2020<br>Year 7 | 2024<br>Year 10 |
| PRE_K                            |                |                |                |                |                |                |                |                |                 |
| KINDERGARTEN                     |                |                |                |                |                |                |                |                |                 |
| 1st                              |                |                |                |                |                |                |                |                |                 |
| 2nd                              |                |                |                |                |                |                |                |                |                 |
| 3rd                              |                |                |                |                |                |                |                |                |                 |
| 4th                              |                |                |                |                |                |                |                |                |                 |
| 5th                              |                |                |                |                |                |                |                |                |                 |
| 6th                              |                |                |                |                |                |                |                |                |                 |
| 7th                              |                |                |                |                |                |                |                |                |                 |
| 8th                              |                |                |                |                |                |                |                |                |                 |
| 9th                              | 297            | 295            | 295            | 303            | 310            | 296            | 293            | 285            | 285             |
| 10th                             | 287            | 275            | 276            | 276            | 284            | 290            | 277            | 274            | 271             |
| 11th                             | 281            | 271            | 248            | 248            | 248            | 256            | 261            | 249            | 247             |
| 12th                             | 278            | 291            | 284            | 260            | 260            | 260            | 269            | 274            | 265             |
| SP ED                            |                |                |                |                |                |                |                |                |                 |
| TOTAL                            | 1143           | 1132           | 1103           | 1087           | 1102           | 1102           | 1100           | 1082           | 1068            |

IAC/PSCP FORM 101.2  
R3/11

## FTE ENROLLMENT PROJECTIONS BY GRADE

LEA CALVERT DATE 24-MARCH-14

School CALVERT COUNTRY SCHOOL

| Enrollments as of September 30TH |                |                |                |                |                |                |                |                |                 |
|----------------------------------|----------------|----------------|----------------|----------------|----------------|----------------|----------------|----------------|-----------------|
|                                  | 2013<br>Actual | 2014<br>Year 1 | 2015<br>Year 2 | 2016<br>Year 3 | 2017<br>year 4 | 2018<br>Year 5 | 2019<br>Year 6 | 2020<br>Year 7 | 2024<br>Year 10 |
| PRE_K                            |                |                |                |                |                |                |                |                |                 |
| KINDERGARTEN                     | 4              | 4              | 4              | 4              | 4              | 4              | 4              | 4              | 2               |
| 1st                              | 1              | 1              | 1              | 1              | 1              | 1              | 1              | 1              | 1               |
| 2nd                              | 1              | 1              | 1              | 1              | 1              | 1              | 1              | 1              | 1               |
| 3rd                              | 3              | 3              | 3              | 3              | 3              | 3              | 3              | 3              | 2               |
| 4th                              | 0              | 0              | 0              | 0              | 0              | 0              | 0              | 0              | 3               |
| 5th                              | 3              | 3              | 3              | 3              | 3              | 3              | 3              | 3              | 2               |
| 6th                              | 4              | 4              | 4              | 4              | 4              | 4              | 4              | 4              | 4               |
| 7th                              | 4              | 4              | 4              | 4              | 4              | 4              | 4              | 4              | 3               |
| 8th                              | 5              | 5              | 5              | 5              | 5              | 5              | 5              | 5              | 5               |
| 9th                              | 6              | 6              | 6              | 6              | 6              | 6              | 6              | 6              | 5               |
| 10th                             | 2              | 2              | 2              | 2              | 2              | 2              | 2              | 2              | 8               |
| 11th                             | 4              | 4              | 4              | 4              | 4              | 4              | 4              | 4              | 3               |
| 12th                             | 7              | 7              | 7              | 7              | 7              | 7              | 7              | 7              | 4               |
| SP ED                            |                |                |                |                |                |                |                |                |                 |
| <b>TOTAL</b>                     | <b>44</b>      | <b>44</b>      | <b>44</b>      | <b>44</b>      | <b>44</b>      | <b>44</b>      | <b>44</b>      | <b>44</b>      | <b>43</b>       |

**IAC/PSCP FORM 101.2  
R3/11**

## FTE ENROLLMENT PROJECTIONS BY GRADE

LEA CALVERT DATE 24-MARCH-14

School ALTERNATIVE ED

| Enrollments as of September 30TH |                |                |                |                |                |                |                |                |                 |
|----------------------------------|----------------|----------------|----------------|----------------|----------------|----------------|----------------|----------------|-----------------|
|                                  | 2013<br>Actual | 2014<br>Year 1 | 2015<br>Year 2 | 2016<br>Year 3 | 2017<br>year 4 | 2018<br>Year 5 | 2019<br>Year 6 | 2020<br>Year 7 | 2024<br>Year 10 |
| PRE_K                            |                |                |                |                |                |                |                |                |                 |
| KINDERGARTEN                     |                |                |                |                |                |                |                |                |                 |
| 1st                              |                |                |                |                |                |                |                |                |                 |
| 2nd                              |                |                |                |                |                |                |                |                |                 |
| 3rd                              |                |                |                |                |                |                |                |                |                 |
| 4th                              |                |                |                |                |                |                |                |                |                 |
| 5th                              |                |                |                |                |                |                |                |                |                 |
| 6th                              |                |                |                |                |                |                |                |                |                 |
| 7th                              | 1              | 1              | 1              | 1              | 1              | 1              | 1              | 1              |                 |
| 8th                              |                |                |                |                |                |                |                |                | 2               |
| 9th                              | 8              | 8              | 8              | 8              | 8              | 8              | 8              | 8              | 4               |
| 10th                             | 5              | 5              | 5              | 5              | 5              | 5              | 5              | 5              | 3               |
| 11th                             | 2              | 2              | 2              | 2              | 2              | 2              | 2              | 2              | 3               |
| 12th                             |                |                |                |                |                |                |                |                | 2               |
| SP ED                            |                |                |                |                |                |                |                |                |                 |
| TOTAL                            | 16             | 16             | 16             | 16             | 16             | 16             | 16             | 16             | 14              |

## FTE ENROLLMENT PROJECTIONS BY GRADE

*CALVERT COUNTY PUBLIC SCHOOLS*

*ALL FACILITIES FOR 2024*

|              |              |
|--------------|--------------|
| PRE-K        |              |
| KINDERGARTEN | 1105         |
| 1st          | 1130         |
| 2nd          | 1142         |
| 3rd          | 1167         |
| 4th          | 1169         |
| 5th          | 1170         |
| 6th          | 1273         |
| 7th          | 1246         |
| 8th          | 1215         |
| 9th          | 1301         |
| 10th         | 1282         |
| 11th         | 1211         |
| 12th         | 1284         |
| SP ED*       | 43           |
| <b>TOTAL</b> | <b>15753</b> |

\*If not included above



SECTION II

FACILITIES INVENTORY

**FACILITIES INVENTORY**LEA: Calvert CountyDATE: 4/24/2014

Page 1 of 4

| SCHOOL NAME &<br>ADDRESS   | GRADES    | SRC | PRIOR<br>FALL<br>ENRLMT | %<br>UTIL | ACREAGE | BUILDING DATE                        |        | PHYS.<br>COND. | COMMENTS                       |
|--|-----------|-----|-------------------------|-----------|---------|--------------------------------------|--------|----------------|--------------------------------|
|  |           |     | 9/10                    |           |         | DATE                                 | SQ.FT. |                |                                |
| Appeal Elementary<br>11655 H. G. Trueman Road<br>Lusby, MD 20657             | 3-5       | 520 | 379                     | 73%       | 31.5    | 1949<br>1956<br>1958<br>1971<br>1988 | 59,275 | Superior       | Chiller Replacement<br>FY 2020 |
| Barstow Elementary School<br>295 Williams Road<br>Prince Frederick, MD 20678 | Pre K - 5 | 723 | 529                     | 73%       | 22      | 2008                                 | 75,635 | New            |                                |
| Beach Elementary<br>7900 Old Bayside Road<br>Chesapeake Beach, MD 20732      | Pre K - 5 | 514 | 630                     | 123%      | 21.6    | 1953<br>1971<br>1981<br>2006         | 55,341 | Superior       | Planning Candidate<br>FY 2019  |
| Calvert Elementary<br>1450 Dares Beach Road<br>Prince Frederick, MD 20678    | Pre K - 5 | 619 | 457                     | 77%       | 18.2    | 1964<br>1974<br>1981<br>2007         | 63,362 | Superior       |                                |
| Dowell Elementary<br>12680 H. G. Trueman Road<br>Lusby, MD 20657             | Pre K - 5 | 694 | 614                     | 88%       | 19      | 1999<br>2007                         | 70,435 | Superior       |                                |
| Huntingtown Elementary<br>4345 Huntingtown Road<br>Huntingtown, MD 20639     | K - 5     | 554 | 513                     | 93%       | 21.0    | 1971<br>1980<br>2006                 | 62,070 | Superior       |                                |
| Mt. Harmony Elementary<br>900 W. Mt. Harmony Road<br>Owings, MD 20736        | K - 5     | 514 | 553                     | 1.08%     | 15.0    | 1961<br>1970<br>1975<br>2007         | 53,069 | Good           | HVAC Systemic<br>FY 2018       |

Note: Physical condition of schools based on State inspection results.  
(SRC) Adjusted for "K" Additions

**FACILITIES INVENTORY**LEA: Calvert CountyDATE: 4/24/2014

Page 2 of 4

| SCHOOL NAME &<br>ADDRESS   | GRADES    | SRC | PRIOR<br>FALL<br>ENRLMT | %<br>UTIL | ACREAGE  | BUILDING DATE        |        | PHYS.<br>COND. | COMMENTS                                 |
|--|-----------|-----|-------------------------|-----------|--|----------------------|--------|----------------|--|
|  |           |     | 9/10                    |           |  | DATE                 | SQ.FT. |                |  |
| Mutual Elementary<br>1455 Ball Road<br>Port Republic, MD 20676           | Pre K - 5 | 604 | 424                     | 70%       | 26.0   | 1975<br>1989<br>2007 | 62,824 | Good           |  |
| Patuxent Elementary<br>35 Appeal Lane<br>Lusby, MD 20657                 | Pre K - 2 | 523 | 399                     | 76%       | 31.5   | 1992<br>2006         | 59,049 | Superior       |  |
| Plum Point Elementary<br>1245 Plum Point Road<br>Huntingtown, MD 20639   | K - 5     | 549 | 447                     | 81%       | (Shared with<br>Plum Point<br>Middle)<br>191.0 | 1991<br>2006         | 62,337 | Superior       |  |
| St. Leonard Elementary<br>5370 St. Leonard Road<br>St. Leonard, MD 20685 | Pre K - 5 | 710 | 499                     | 70%       | 28.0   | 1996<br>2006         | 71,680 | Superior       |  |
| Sunderland Elementary<br>150 Clyde Jones Road<br>Sunderland, MD 20689    | K - 5     | 710 | 659                     | 93%       | 9.6  | 1988<br>2005         | 69,494 | Superior       | Partial Roof Replacement FY<br>2015 CIP. |
| Windy Hill Elementary<br>9550 Boyds Turn Road<br>Owings, MD 20736        | Pre K - 5 | 694 | 626                     | 90%       | 16.0   | 1996<br>2006         | 66,126 | Superior       |  |

Note: Physical condition of schools based on State inspection results.

(SRC) Adjusted for "K" Additions

# FACILITIES INVENTORY

LEA: Calvert County

DATE: 4/24/2014

| SCHOOL NAME & ADDRESS  | GRADES | SRC | PRIOR FALL ENRLMT | % UTIL | ACREAGE                                      | BUILDING DATE |         | PHYS. COND. | COMMENTS       |
|--|--------|-----|-------------------|--------|--|---------------|---------|-------------|----------------|
|  |        |     | 9/10              |        |  | DATE          | SQ.FT.  |             |                |
| Calvert Middle<br>655 Chesapeake Blvd.<br>Prince Frederick, MD 20678   | 6 - 8  | 650 | 598               | 92%    | (Shared with Calvert High)<br>83.3           | 2010          | 104,005 | New         |                |
| Mill Creek Middle<br>12200 Southern Connector Blvd.<br>Lusby, MD 20657 | 6 - 8  | 756 | 538               | 71%    | 34   | 2000          | 101,300 | Superior    |                |
| Northern Middle<br>2954 Chaneyville Road<br>Owings, MD 20736           | 6 - 8  | 680 | 683               | 100%   | (Shared with Northern High)<br>112.9         | 1976          | 88,780  | Good        | Systemic needs |
| Plum Point Middle<br>1475 Plum Point Road<br>Huntingtown, MD 20639     | 6 - 8  | 760 | 696               | 92%    | (Shared with Plum Point Elementary)<br>191.0 | 1992          | 101,300 | Superior    |                |
| Southern Middle<br>9615 H. G. Trueman Road<br>Lusby, MD 20657          | 6 - 8  | 795 | 526               | 66%    | 26.0   | 1979<br>1996  | 106,260 | Superior    |                |
| Windy Hill Middle<br>9550 Boyds Turn Road<br>Owings, MD 20736          | 6 - 8  | 760 | 741               | 98%    | 24.0   | 1998          | 101,300 | Superior    |                |

Note: Physical condition of schools based on State inspection results.

**FACILITIES INVENTORY**LEA: Calvert CountyDATE: 4/24/2014

Page 4 of 4

| SCHOOL NAME &<br>ADDRESS  | GRADES        | SRC  | PRIOR<br>FALL<br>ENRLMT   | %<br>UTIL | ACREAGE                                      | BUILDING DATE        |         | PHYS.<br>COND. | COMMENTS  |
|---|---------------|------|---|-----------|--|----------------------|---------|----------------|---|
|   |               |      | 9/10  |           |  | DATE                 | SQ.FT.  |                |   |
| Calvert High<br>520 Fox Run Blvd.<br>Prince Frederick, MD 20678                   | 9 - 12        | 1275 | 1172  | 92%       | 83.3   | 2014                 | 236,300 | New            |   |
| Huntingtown High<br>4125 N. Solomons Island Road<br>Huntingtown, MD 20639         | 9 - 12        | 1500 | 1513  | 101%      | 89   | 2005                 | 206,248 | Superior       |   |
| Northern High<br>2950 Chaneyville Road<br>Owings, MD 20736                        | 9 - 12        | 1233 | 1476  | 120%      | (Shared with<br>Northern<br>Middle)<br>112.9 | 1972<br>1985<br>1992 | 178,531 | Superior       | Replacement Construction to<br>be scheduled in future CIP.<br>Planning Request FY 2013<br>Funding Request FY 2015   |
| Patuxent High<br>12485 Southern Connector<br>Blvd.<br>Lusby, MD 20657             | 9 - 12        | 1230 | 1143  | 93%       | 73.0   | 1996                 | 185,900 | Good           | Partial Roof Replacement<br>FY 2019   |
| Career and Technology<br>Academy<br>330 Dorsey Road<br>Prince Frederick, MD 20678 | 9 - 12        | 445  | Shared with<br>Northern,<br>Huntingtown,<br>Patuxent &<br>Calvert high<br>schools | N/A       | 7.0  | 1970<br>2005         | 115,364 | Good           | Partial Re-roof<br>FY 2020  |
| Calvert Country<br>1350 Dares Beach Road<br>Prince Frederick, MD 20678            | Special<br>Ed | 120  | 44  | 37%       | 14.82  | 1958<br>1983         | 33,148  | Superior       | HVAC Systemic<br>FY 2018  |
| Hunting Creek Annex<br>4105 Old Town Road<br>Huntingtown, MD 20639                | Special<br>Ed | 120  | Varies  | N/A       | 3.19   | 1944<br>1960         | 6,977   | Fair           | Facility houses Itinerant<br>services & a testing facility<br>for special needs children.<br>Approximately 160 children<br>tested at this facility. Also<br>houses Adult Ed. classes. |

Note: Physical condition of schools based on State inspection results.

**THIS PAGE LEFT BLANK**

## SECTION III

### FACILITIES NEEDS

**FACILITIES NEEDS SUMMARY**

LEA: Calvert County

DATE: 4/24/2014

| EXISTING AND/OR PROPOSED SCHOOL | TYPE OF PROJECT                    | GRADES       | SRC | ENROLLMENTS |                            | JUSTIFICATION FOR PROJECT  | PLANNING YEAR REQUEST |
|---------------------------------|------------------------------------|--------------|-----|-------------|----------------------------|--|-----------------------|
|                                 |                                    |              |     | ACTUAL      | 5 <sup>TH</sup> YEAR PROJ. |  |                       |
| Beach Elementary School         | New Construction and/or Renovation | Pre-K thru 5 | 514 | 625         | 533                        | Growth (Planning)<br>Replacement Project original structure built in 1953 with additions added in 1971 and 1981. Systemic systems are beyond life cycle. Instructional spaces were outdated open classroom concept. Situated in a PFA. | FY 2019 (PFA)         |



**FACILITIES NEEDS****SYSTEMIC PROJECTS**LEA: Calvert CountyDATE: 4/24/2014

| EXISTING AND/OR PROPOSED SCHOOL | TYPE OF PROJECT                 | GRADES     | SRC  | ENROLLMENTS                |                            | JUSTIFICATION FOR PROJECT  | FUNDING YEAR REQUEST         |
|---------------------------------|---------------------------------|------------|------|----------------------------|----------------------------|--|------------------------------|
|                                 |                                 |            |      | ACTUAL                     | 5 <sup>TH</sup> YEAR PROJ. |  |                              |
| Northern High School            | New Construction and Renovation | 9-12       | 1233 | 1479                       | 1406                       | Planning Approved FY 2013<br>Outdated open classroom concept is in need of modernization of instructional areas and systemic upgrades. Serves the Dunkirk Town Centers and Owings. | FY 2015-2019<br>Adjacent PFA |
| Mount Harmony Elementary School | HVAC Systemic                   | K - 5      | 514  | 559                        | 471                        | HVAC System will be 40 years of age well beyond 30 year life cycle   | FY 2018                      |
| Calvert Country School          | HVAC Systemic                   | Pre K - 12 | 120  | 53                         | 39                         | Boilers, Chiller and AHUs are beyond life cycles. IAQ issues.  | FY 2018                      |
| Patuxent High School            | Built-up Roof                   | 9 - 12     | 1230 | 1139                       | 1082                       | Replace Built-up Roof (1995)   | FY 2019                      |
| Career and Technology Academy   | Partial Re-roof                 | 10-12      | 445  | Shared w/four high schools | Shared w/four high schools | Replace remaining section not roofed during 2005 renovation  | FY 2020                      |

## PROJECTED SCHOOL NEEDS

The funding request for the replacement of Northern High School has been granted in FY 2015. Construction to commence spring of 2015.

Beach Elementary School is in considerable need of attention. Planning for the replacement or renovation/expansion of this facility will be requested in the FY 2018 CIP. A feasibility study is scheduled for FY 2017. The Board of Education has redistricted the attendance area to alleviate the present over enrollment.

In the FY 2016 through FY 2020 cycles, our systemic requests will include:

- FY 2018      HVAC Systemic at Mt. Harmony Elementary School
- FY 2018      HVAC Systemic at Calvert Country School
- FY 2019      Replacement of PHS BUR roof
- FY 2020      Chiller Replacement at Appeal Elementary School
- FY 2020      Partial Roof Replacement at Career Technology Academy

With the exception of Beach Elementary School and to a lesser extent Northern Middle School we are at this time well positioned to handle our enrollment needs. Our buildings are well maintained. Generally our future needs will involve systemic upgrades to building systems which have served us well beyond their anticipated life cycles.



April 23, 2014

Mr. George R. Leah, Jr.  
Director of School Construction  
Calvert County Public Schools  
1305 Dares Beach Road  
Prince Frederick, MD 20678

Dear Mr. Leah:

We have received your letter dated April 16, 2014 and the enclosed Calvert County 2013 Actual Enrollments and 2014 - 2023 enrollment projections.

We compared Calvert County's projections to those generated by our Department and there is a difference of less than/or no more than 5 percent for years 2014 - 2022. You may use the local projections (2014-2022) for updating your 2014 Educational Facilities Master Plan (EFMP) and 2016 Capital Improvement Program Submission. However, we are unable to justify the 2023 local enrollment projection that you have provided. Please modify this number and bring it within 5% of the State's enrollment projection or contact me at 410.767.4564 to discuss.

In addition, we noted that the 2013 actual enrollment on your calculation worksheet is not consistent with the official actual enrollment listed by the Maryland State Department of Education. The Maryland Department of Planning recognizes the Maryland State Department of Education's K-12 enrollment figure as the official actual enrollment for 2013.

We look forward to receiving your updated EFMP in July. A copy of this letter and its attachment should be included in the Plan.

Sincerely,

Pat Gouchet, Director  
Director, Infrastructure Planning Division

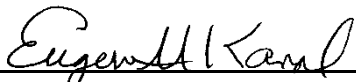
cc: Dr. David Lever, PSCP (w/enclosure)  
Mr. Mark Goldstein, MDP

Marlin O Malley, Governor  
Anthony G. Brown, Lt. Governor

Richard Eberhart Hall, AICP Secretary  
Amanda Stakem Conn, Esq., Deputy Secretary

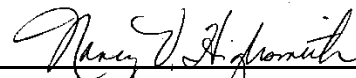
| <b>Jurisdiction</b> | <b>2013</b>   | <b>2014</b>   | <b>2015</b>   | <b>2016</b>   | <b>2017</b>   | <b>2018</b>   | <b>2019</b>   | <b>2020</b>   | <b>2021</b>   | <b>2022</b>   | <b>2023</b>   |
|---------------------|---------------|---------------|---------------|---------------|---------------|---------------|---------------|---------------|---------------|---------------|---------------|
| <b>Calvert</b>      | <b>15,870</b> | <b>15,773</b> | <b>15,639</b> | <b>15,569</b> | <b>15,579</b> | <b>15,595</b> | <b>15,597</b> | <b>15,572</b> | <b>15,532</b> | <b>15,606</b> | <b>15,660</b> |
| <b>MDP</b>          | 15,859        | 15,670        | 15,530        | 15,440        | 15,270        | 15,220        | 15,070        | 14,960        | 14,860        | 14,810        | 14,790        |
| <b>Diff</b>         | 11            | -86           | -31           | 39            | 139           | 325           | 377           | 502           | 572           | 746           | 850           |
| <b>% Diff</b>       | 0.07%         | -0.55%        | -0.20%        | 0.25%         | 0.91%         | 2.14%         | 2.50%         | 3.36%         | 3.85%         | 5.04%         | 5.75%         |

The public school system of Calvert County does not discriminate on the basis of race, color, sex, age, national origin, religion or handicapping conditions in matter of affecting the provision of access to educational programs, and nothing in this Comprehensive Educational Facilities Master Plan of Calvert County is intended to or will be allowed to institute, reinstate, maintain, or further such discrimination.



---

Eugene M. Karol, ED.D.  
President



---

Nancy V. Highsmith  
Interim Superintendent

---

April 24, 2014

Date

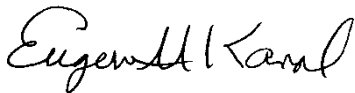
# Calvert County Public Schools

---

Nancy V. Highsmith, Interim Superintendent of Schools

1305 Dares Beach Road  
Prince Frederick, MD 20678  
Telephone: (410) 535-1700  
(301) 855-1834  
FAX: (410) 535-7298  
TDD: (410) 535-6852  
<http://www.calvertnet.k12.md.us>

At a regularly scheduled Board Meeting on May 22, 2014, the Educational Facilities Master Plan was on the agenda for approval. A discussion was held on the Plan. Acting on the motion of Eugene Karol, and the second of Dawn Balinski, the board approved the Educational Facilities Master Plan by a vote of 5 to 0 as presented.



Eugene M. Karol, ED.D.

President



Director: Charles Julianon, AICP

**CALVERT COUNTY  
DEPARTMENT OF  
COMMUNITY PLANNING & BUILDING**

150 Main Street  
Prince Frederick, Maryland 20678  
410-535-2348 • 301-855-1243  
Fax: 410-414-3092

*Board of Commissioners*  
Gerald W. Clark  
Pat Nutter  
Susan Shew  
Evan K. Slaughterhouse Jr.  
Steven R. Woems

May 19, 2014

Nancy V. Highsmith, Interim Superintendent  
Calvert County Public Schools  
1305 Dares Beach Road  
Prince Frederick, MD 20678

Dear Ms. Highsmith:

Thank you for providing the draft Calvert County School Facilities Plan FY 2016 to the Department of Community Planning & Building for review. This Department has reviewed the Facilities Plan and finds it to be consistent with the 2010 Calvert County Comprehensive Plan.

The Board of County Commissioners must approve funding for any of the proposed FY 2016 capital expenditures as part of the County's Capital Improvements Plan.

Thank you for the opportunity to review the Plan.

Sincerely,

A handwritten signature in blue ink that reads "Thomas Barnett".

Thomas Barnett, AICP  
Director

Cc: Board of County Commissioners  
County Administrator

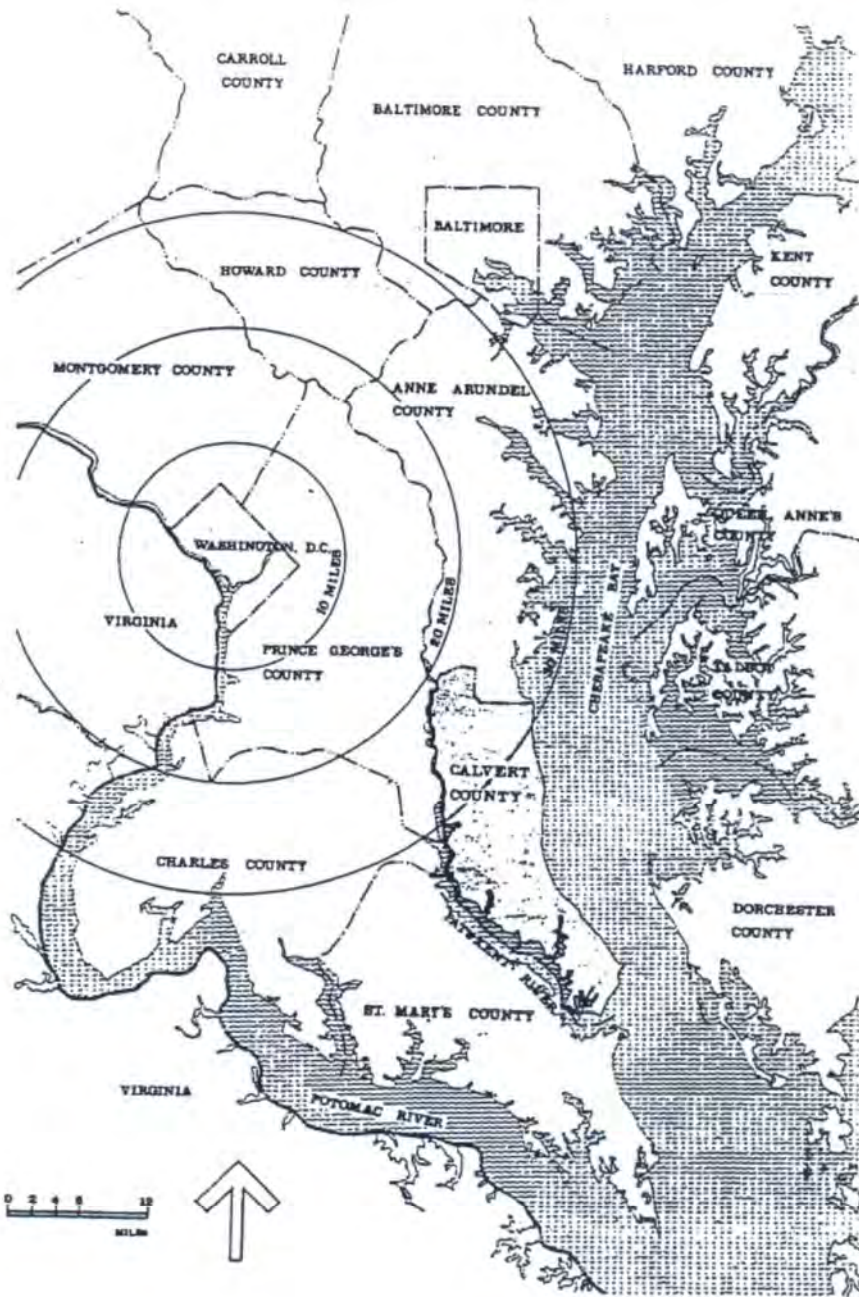
Mailing Address: 175 Main Street, Prince Frederick, Maryland 20678  
Maryland Relay for Impaired Hearing or Speech: 1-800-735-2258

**THIS PAGE LEFT BLANK**



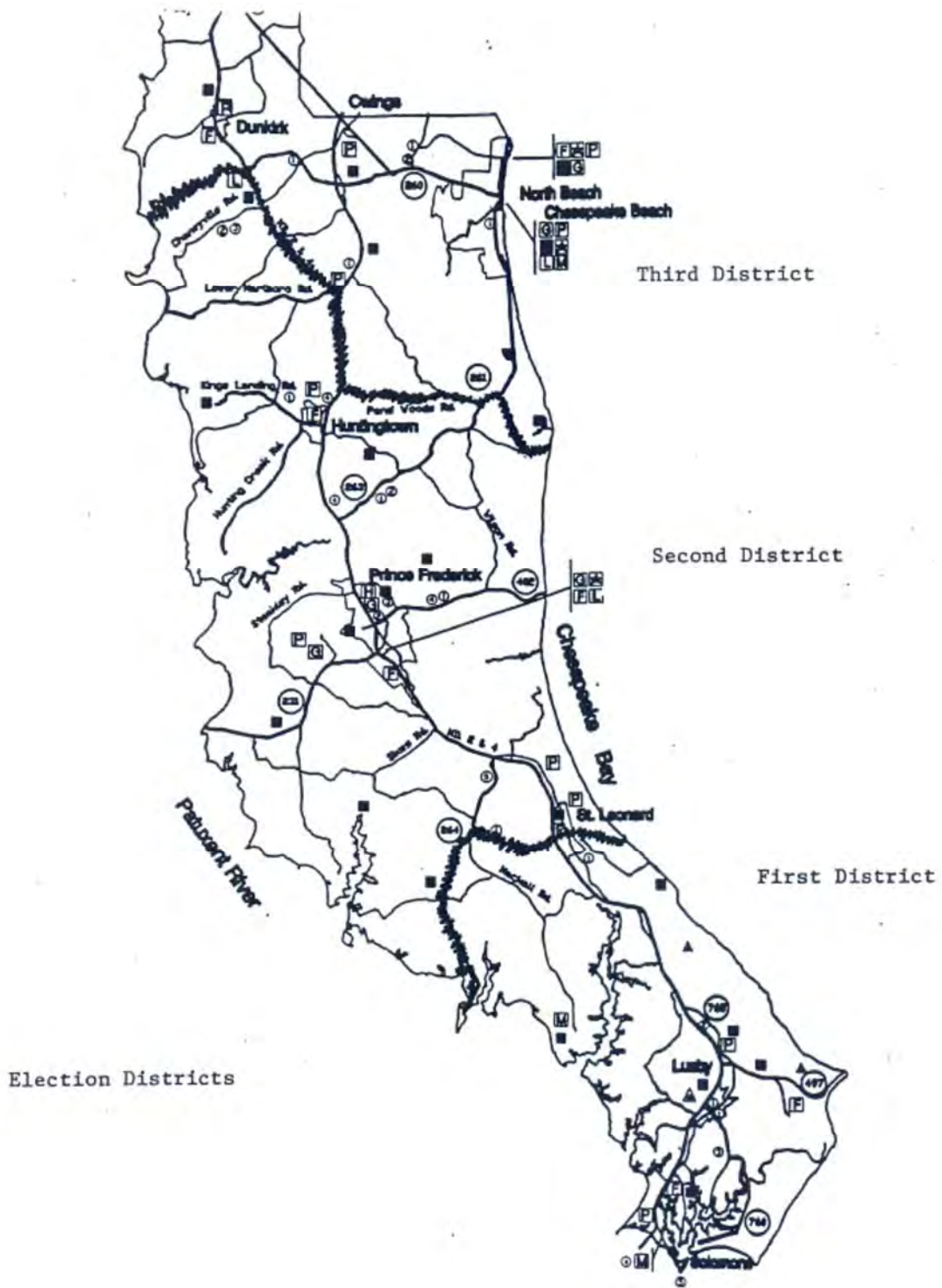
## SECTION IV

## APPENDIX

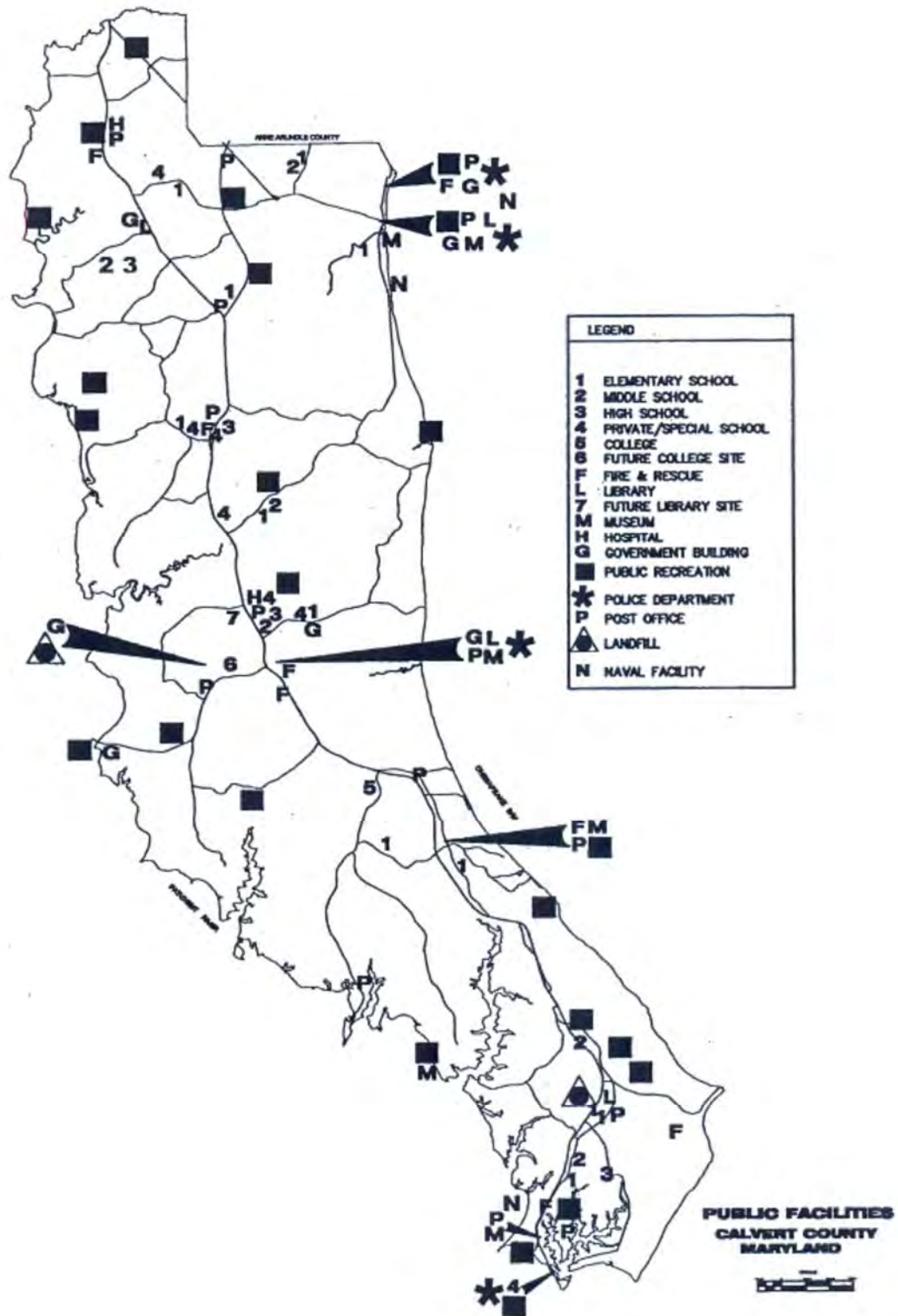


# LOCATION

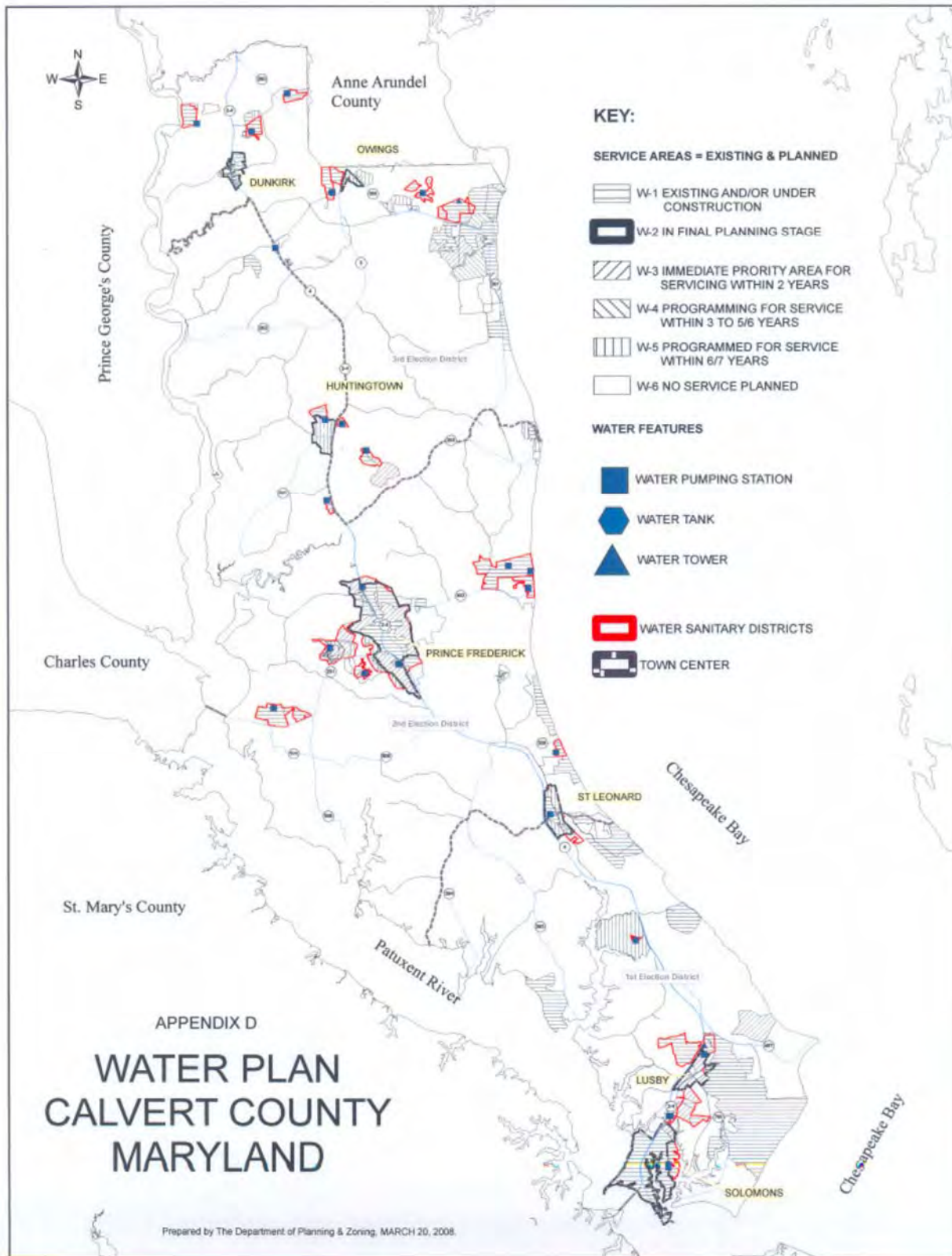
Appendix A



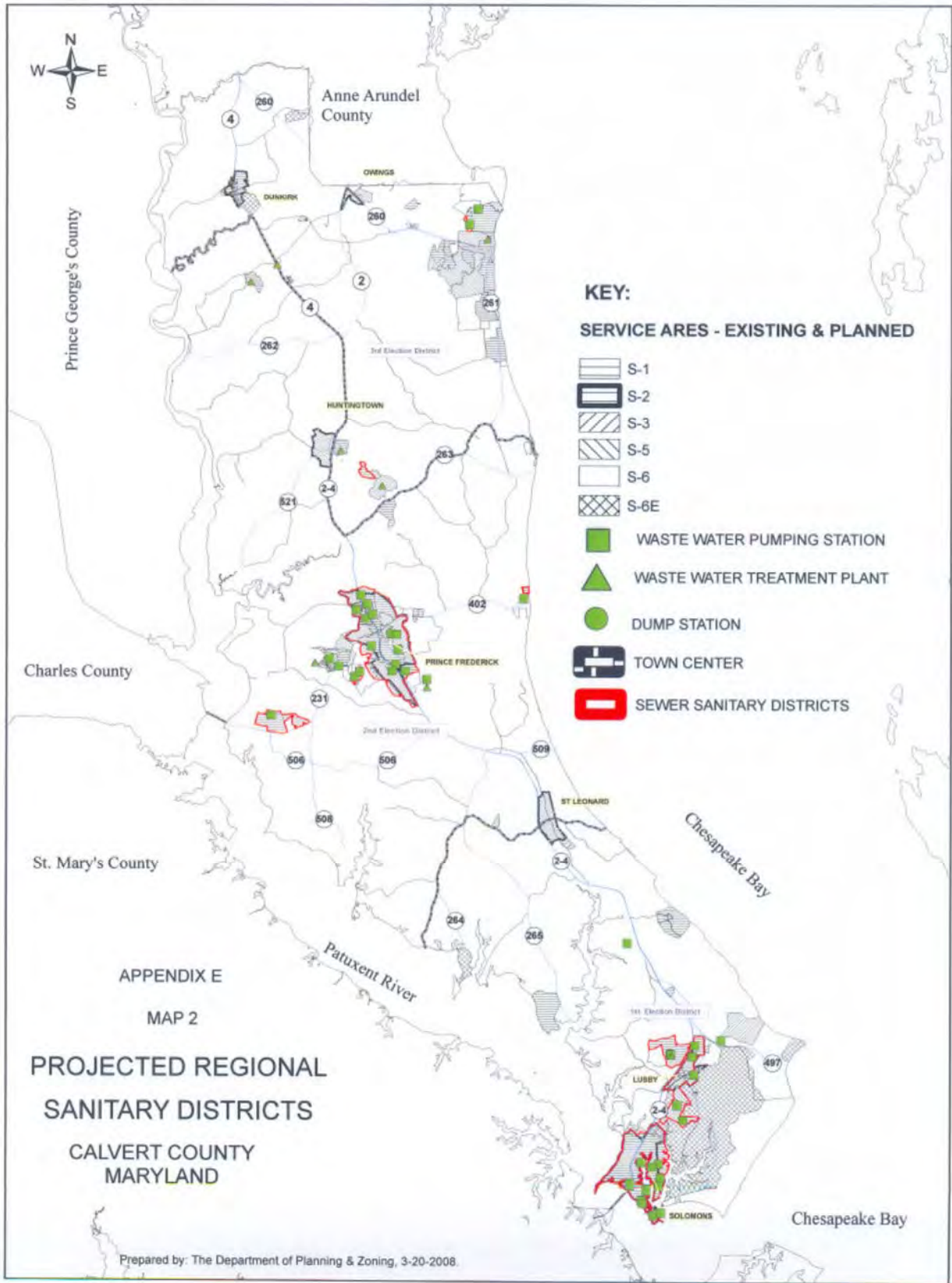
Appendix B



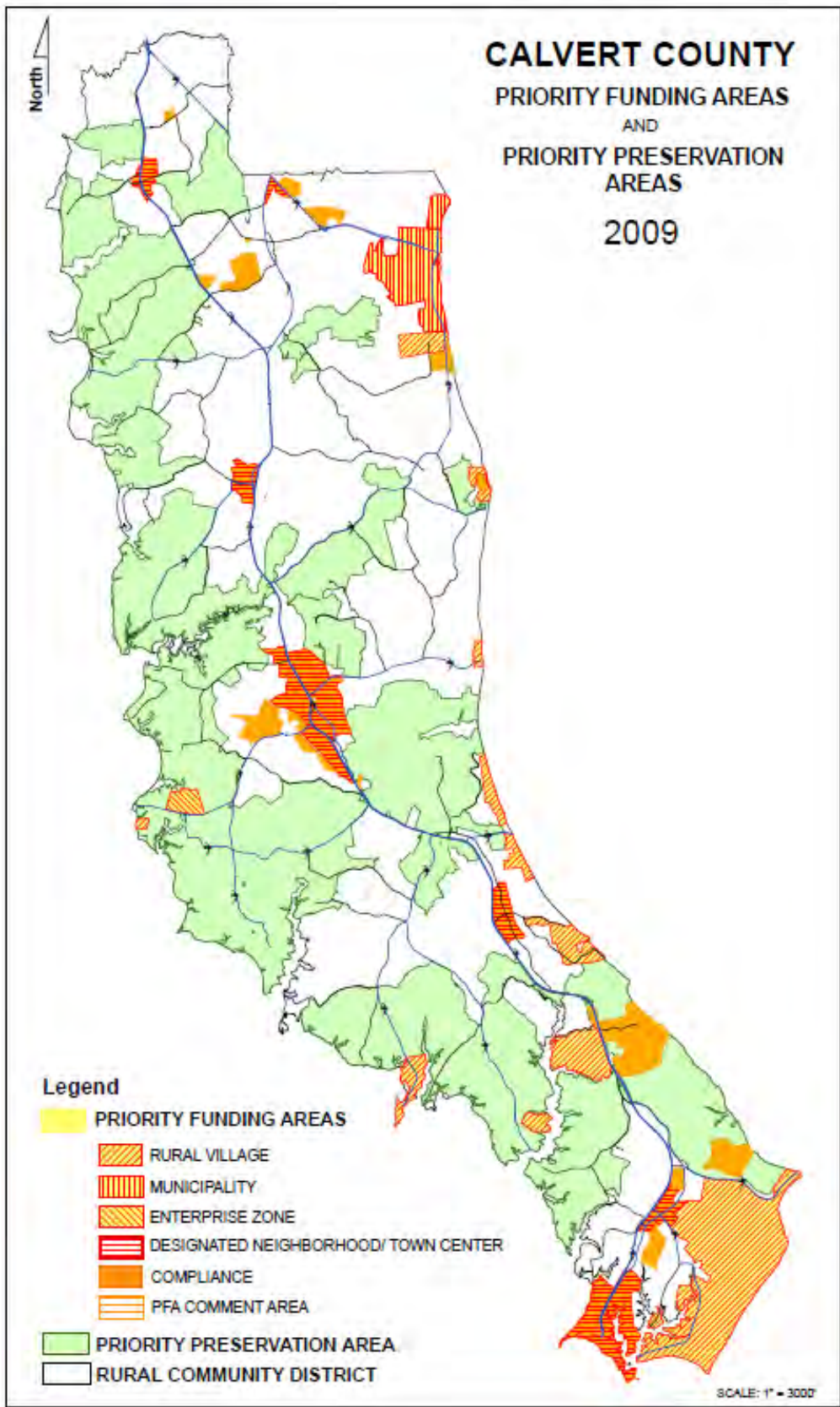
Appendix C



Appendix D



Appendix E

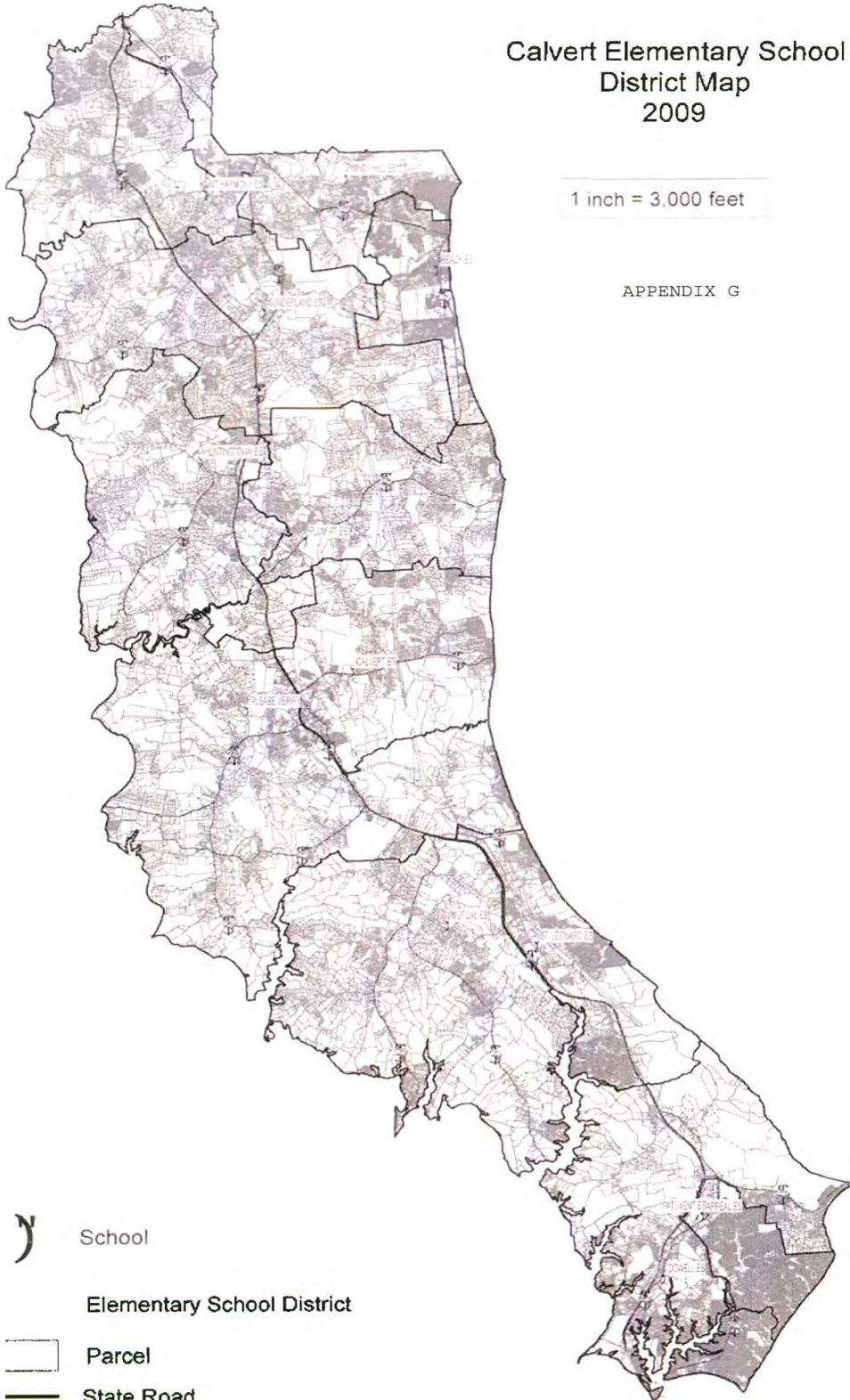


Appendix F

Calvert Elementary School  
District Map  
2009

1 inch = 3,000 feet

APPENDIX G



-  School
-  Elementary School District
-  Parcel
-  State Road

**“UNDER CONSTRUCTION”  
BES REDISTRICTING**

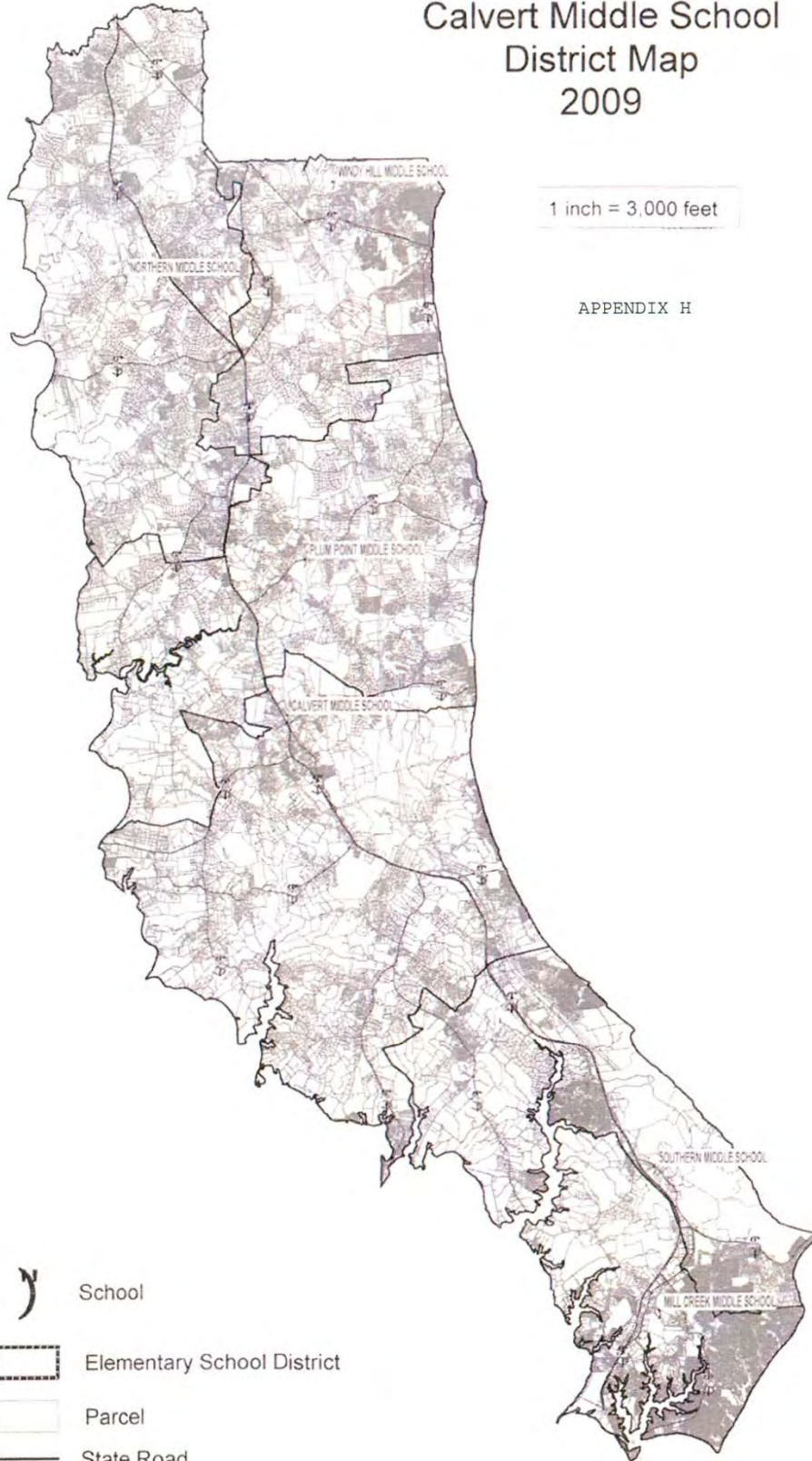
Appendix G



# Calvert Middle School District Map 2009

1 inch = 3,000 feet

APPENDIX H

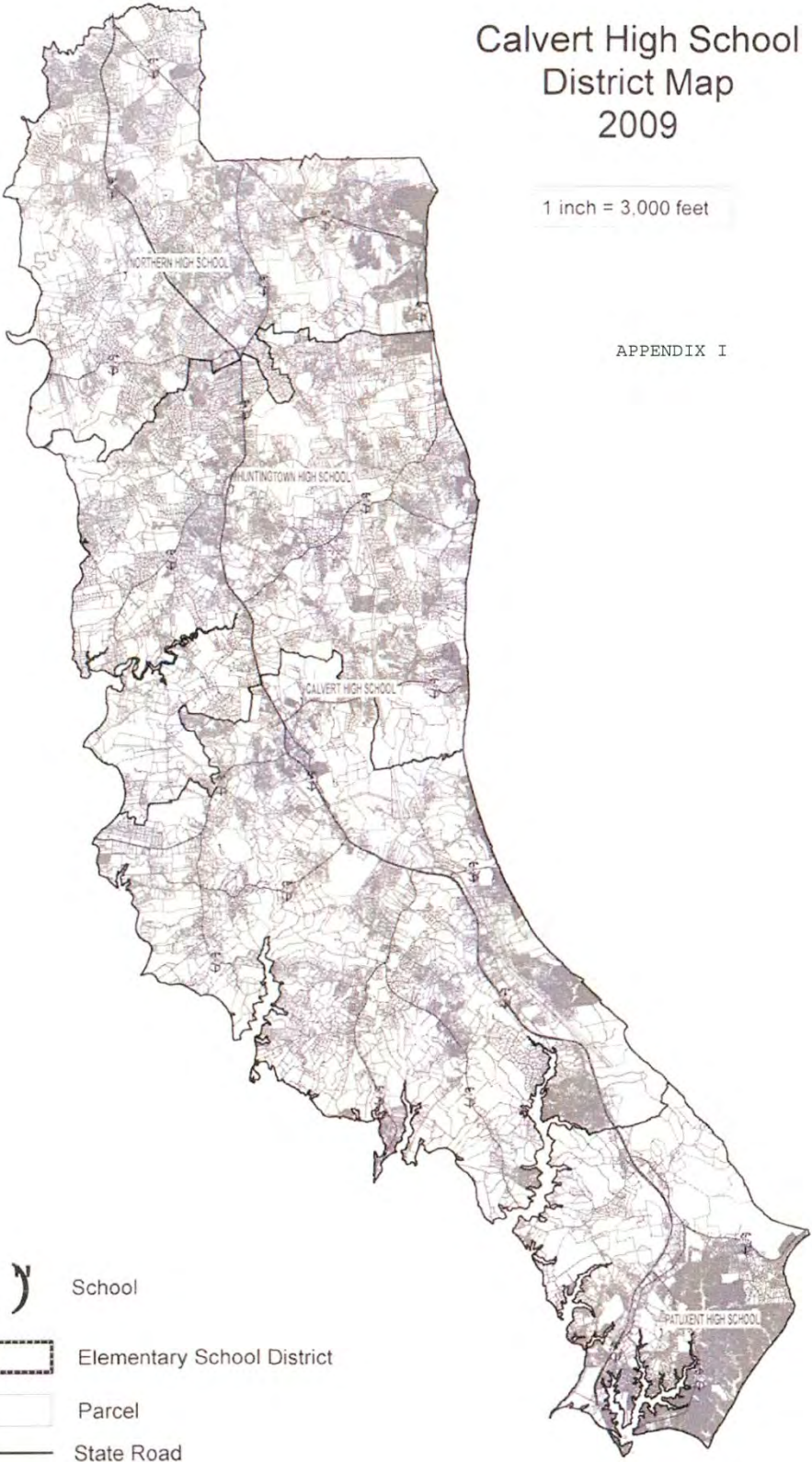


Appendix H

# Calvert High School District Map 2009

1 inch = 3,000 feet

APPENDIX I



Appendix I

APPENDIX J

Calvert County Public Schools

Existing Feeder Plan

Mt. Harmony/Sunderland/Huntingtown Elementary



Northern Middle

Windy Hill/Beach/Sunderland Elementary



Windy Hill Middle

Huntingtown/Beach/Plum Point/Calvert Elementary



Plum Point Middle

Barstow/Calvert/Mutual/St. Leonard Elementary



Calvert Middle

Mutual/St. Leonard/Appeal/Dowell/Patuxent Elementary



Southern Middle

Appeal/Dowell/Patuxent



Mill Creek Middle

Windy Hill Middle/Northern Middle



Northern High

Plum Point Middle/Calvert Middle/Northern Middle



Huntingtown High

Calvert Middle/Southern Middle



Calvert High

Southern Middle/Mill Creek Middle



Patuxent High School

Effective School Year 2012-2013

## FORMER SCHOOL INVENTORY

### FACILITIES INVENTORY

LEA: Calvert CountyDATE: 4/24/2014

| SCHOOL NAME &<br>ADDRESS   | GRADE<br>S | SRC | PRIOR<br>FALL<br>ENRLMT | %<br>UTIL | ACREAGE | BUILDING DATE |        | PHYS.<br>COND. | COMMENTS  |
|--|------------|-----|-------------------------|-----------|---------|---------------|--------|----------------|---|
|  |            |     | 9/10                    |           |         | DATE          | SQ.FT. |                |   |
| Brooks Administration<br>Building<br>1305 Dares Beach Road<br>Prince Frederick, MD 20678 | Admin      | --- | ---                     | 100%      | 8.45    |               | 36,852 | Good           |   |
| Calvert Middle School<br>435 Solomons Island Road N<br>Prince Frederick, MD 20678        | -          | -   | -                       | -         | -       | -             | -      | -              | Facility closed June 2010.<br>Property and<br>improvements<br>transferred to local<br>government. |
| Calvert High School<br>520 Fox Run Boulevard<br>Prince Frederick, MD 20678               | -          | -   | -                       | -         | -       | -             | -      | -              | Facility Closed June 2012.<br>New Facility opened<br>March 2014                                   |

APPENDIX K

**Calvert County Public Schools  
1305 Dares Beach Road  
Prince Frederick, MD 20678**

**Policy Statement #1510 (Administration) of the Board of Education Regarding  
School Closings, Delayed Openings and Early Dismissals Due to Emergencies**

I. Purpose

To provide uniform procedures for school closings, delayed openings or early dismissals due to inclement weather or other emergency conditions

To maintain a process of employee and community notification when school schedules are changed as a result of inclement weather or emergencies

To define employee working hours when school schedules are changed as a result of inclement weather or emergencies

II. Policy Statement

To ensure student and employee safety, there are times when school opening and closing schedules must be altered as a result of inclement weather or other emergencies. When such conditions occur, the Board of Education recognizes the importance of clear directives to employees as well as timely communications to our community. Therefore, processes will be maintained that define the decision-making process, the notification process, and employee working hours when such events occur.

III. Delegation of Authority

The Superintendent is directed to develop administrative procedures to implement this policy in accordance with all local policies and local, state and federal laws and regulations, and to communicate this policy and all accompanying procedures to staff and community members.

IV. Exceptions

There are no exceptions to this policy. However, the Board, by majority vote, may temporarily suspend all or part of this policy. Suspension of all or part of this policy, however, in no way relieves the Board of its obligation to comply with the pertinent local, state and federal laws and regulations and the rules and regulations of the Maryland State Board of Education and the Maryland State Department of Education.

V. Review

This policy will be reviewed at the end of four years, or sooner, if approved by majority vote of the Board of Education in public session.

VI. Effective Date

This policy is effective January 13, 2011.

Citations

State Law:

State Reg.:

Federal Law:

Adm. Reg.:

Neg. Agr.:

Other Citation:

Administration #1510

Originally Adopted: 2/10/00

Revised: 4/14/05; 3/13/08; 1/13/11

**Calvert County Public Schools  
1305 Dares Beach Road  
Prince Frederick, MD 20678**

**Administrative Procedures for Policy #1510 (Administration) of the Board of Education  
Regarding School Closings, Delayed Openings and Early Dismissals Due to Emergencies**

**Procedures for Changes in School Schedules in Emergency Situations**

- I. The Superintendent of Schools or his/her designee will determine when schools will be closed for emergency purposes. In cases of inclement weather, the Director of Transportation and/or his designee will, after conferring with the Director of School Facilities, make a recommendation to the Superintendent regarding the status of schools.
  - A. Emergency Two-Hour Delayed Opening
    - i. The decision will be made to delay school opening prior to 5:00 a.m.
    - ii. Notification to the public and CCPS personnel will begin no later than 5:15 a.m.
    - iii. All school vehicles/buses will begin their a.m. trips two hours later than usual, as appropriate.
    - iv. Non-public school vehicles/buses will begin their a.m. trips two hours later than usual, as appropriate, unless the route is through another jurisdiction where schools have been closed for the day. In this case, non-public transportation is cancelled.
    - v. A.M. prekindergarten will be canceled.
    - vi. P.M. prekindergarten students will be picked up at the regular time.
  - B. Emergency Early Dismissal
    - i. P.M. prekindergarten will be cancelled.
    - ii. Students in the a.m. prekindergarten program will not be taken home at their usual times. They will remain at school and go home with students in grades K-5.
    - iii. Prekindergarten students will go home on the bus which brought them to school unless a different drop-off point has been prearranged by their parents/guardians.
    - iv. Schools will provide lunch for the students on these days.
    - v. If any jurisdiction along the route to or from a non-public school closes early, the school bus/vehicle under contract to CCPS will return students home early, even if CCPS remains in session for a full student day.
  - C. Emergency Closing of Schools for the Day
    - i. The decision to close schools is made prior to 5:00 a.m.
    - ii. Notification to the public and CCPS personnel will begin no later than 5:15 a.m.
- II. Notification of School Schedule Changes
  - A. The Superintendent or designee in the Department of Transportation will initiate the employee telephone notification chain in accordance with procedure 1510.3 – Notification Chain Procedures

- B. The Superintendent or designee in the Department of Transportation will notify the mass media outlets in the table below:

| Radio or TV Station  | Frequency or Channel    | City                |
|----------------------|-------------------------|---------------------|
| AP                   | Mass Media Distribution | Maryland Suburbs    |
| The Baynet           | Internet                | Southern Maryland   |
| Somar Communications | Mass Media Distribution | Southern Maryland   |
| WSMD                 | 98.3 FM                 | Mechanicsville, MD  |
| WBAL                 | 1090 AM                 | Baltimore, Maryland |
| WTOP                 | 103.5 FM                | Washington, DC      |
| WRC TV               | 4                       | Washington, DC      |
| WTTG TV              | 5                       | Washington, DC      |
| WJLA TV              | 7                       | Washington, DC      |
| WUSA TV              | 9                       | Washington, DC      |
| WBAL TV              | 11                      | Baltimore, Maryland |

- C. The Superintendent or designee will post information about schedule changes on the Calvert County Public Schools website.
- D. The Superintendent or designee will send email notification of school schedule changes to subscribers of the Calvert County Public Schools email notification list.
- E. The Director of Transportation or designee will activate the bus contractor notification chain and contact any other school vehicle service providers. School vehicle/bus drivers will notify bus assistants as appropriate.
- F. If school is in session when the decision to close is made, the Superintendent or designee will give each school the dismissal information via telephone and email.
- i. All students at the Career and Technology Academy will be returned to their home schools.
  - ii. Each school principal or Supervisor of Instruction who authorized a field trip will determine whether there are students away from their home school on field trips or at school sanctioned events or activities.
    - a. The Superintendent's designee or Executive Director of School Operations or designee will consult with the Director of Transportation for information.
    - b. A decision by the principal or Supervisor of Instruction to continue those field trips or to return those students to school will be made in consultation with the Executive Director of School Operations.

### III. School Vehicle/Bus Routes

- A. When schools are officially in session, school vehicles will follow their regularly assigned routes unless a determination is made by the driver not to traverse certain portions of the route in the interest of safety. This decision will be made based on the route's road conditions.
- i. The Director of Transportation will direct school vehicle contractors to have their drivers notify guardians in advance and in writing of the roads the drivers believe



they will not be able to safely travel and provide the location of the alternate pick-up and/or drop-off location.

- ii. These notifications must be provided to the Director of Transportation.
- iii. In a situation where advanced written notice to the guardian was not possible, the school vehicle driver may not discharge the student at an alternate stop location. The school vehicle driver shall contact the Transportation Department who will assist in contacting guardians.
- iv. If contact with the guardian cannot be made, the bus driver will return the child to the student's school unless authorized to do otherwise by the Director of Transportation or other supervisory transportation staff.

All safety precautions will be observed as conditions dictate.

#### IV. Student Attendance

- A. When schools are officially in session, a pupil is either "present" or "absent" depending upon whether or not he/she is physically present at school. Absence due to failure of a bus to operate is considered a lawful and excused absence.
- B. Policy 3005 – Student Attendance – governs attendance procedures.

Administration 1510.1

Procedures Written: 8/90

Procedures Revised: 4/14/05; 11/1/06; 1/3/08, 1/13/11

Reviewed Without Changes: 3/13/08

**Administrative Procedures for Policy #1510 (Administration) of the Board of Education  
Regarding School Closings, Delayed Openings,  
and Early Dismissals Due to Emergencies**

**Notification Chain Procedures**

1. The Director of Transportation and/or designee will annually update and disseminate an emergency phone notification chain to inform administrative staff of school and/or work schedule changes.
2. The emergency phone notification chain will provide communication to all Directors, Principals, and Executive Staff.
3. Principals and Directors are responsible for further notification of their staff members.
  - a. A principal or director who is on planned leave is responsible for notifying the principal or director above him/her on the notification chain of the name and telephone contact information of the vice-principal or designee within the department to call in his/her absence. This is to ensure the continuity of communication within the notification chain.
4. Principals and Directors will familiarize their staff with Procedure 1510.3 Regarding School Closings, Delayed Openings and Early Dismissals.
5. The Superintendent or his/her designee will determine when to activate the emergency phone notification chain.
6. The Director of Transportation and/or designee will maintain a separate notification chain in order to notify public safety agencies, state and county maintenance, non-public special education facilities and local private schools that provide their own transportation of CCPS closings, delayed openings and early dismissals due to emergency.

Administration 1510.2

Policy Originally Adopted: February 10, 2000

Revised: 4/14/05

Procedures Written: Unknown

Procedures Revised: 10/23/00; 4/14/05; 10/23/07; 3/13/08, 1/13/11

Page 98 of 103

**Calvert County Public Schools  
1305 Dares Beach Road  
Prince Frederick, MD 20678**

**Administrative Procedures for Policy #1510 (Administration) of the Board of Education  
Regarding School Closings, Delayed Opening and Early Dismissals Due to Emergencies**

**Employee Working Hours during Emergency School Closings,  
Delayed School Openings, and Early School Dismissals**

1. The Superintendent of Schools or his/her designee will determine when schools will be closed for emergency purposes.
2. In instances of inclement weather, the Director of Transportation will collect information and make a recommendation to the Superintendent regarding the status of schools. The Director of Transportation shall consult the Director of School Facilities as part of this process.
3. In instances of activation of the county government's Emergency Operations Center, the CCPS representative will inform the Superintendent and/or designee of information pertaining to the schools and community.
4. When schools are to be closed, the office of the Superintendent, in cooperation with the department heads that may be involved, shall prepare a written statement for dissemination to the public. The statement shall include the purpose of the emergency closing, the time limits prescribed, and the order in which the closing is to proceed. A prepared statement will be posted on the website at the direction of the Office of the Superintendent.

These procedures set forth the employee working hours during emergency school closings, delayed school openings, and early school dismissals. Codes have been developed and defined below.

**The following positions are designated as emergency personnel and these staff members are to report to work as noted in the Code descriptions below.**

- Superintendent and/or his/her designee
- Designated emergency maintenance staff
- Maintenance supervisory personnel
- Transportation supervisory personnel
- Head day and night custodians at all buildings
- Central Office switchboard operator

## **Employee Working Hours During Inclement Weather and Other Emergency Conditions**

### **WHEN SCHOOLS ARE CLOSED (Codes white, red, yellow, and green are only used when schools are closed for students.)**

- **Code White:** A Code White is called when conditions are not safe for any employee to attempt to report to work. Safety concerns may include road conditions or conditions at CCPS facilities including school buildings. No employees are to report to work when a Code White is called.
  - No employees report. (Code White)
- **Code Red:** A Code Red is called when conditions are not safe for non-emergency personnel to report to work. Safety concerns may include road conditions or conditions at CCPS facilities including school buildings. Non-emergency employees are not to report to work when a Code Red is called.
  - All emergency personnel report as usual. (Code Red)
  - All other personnel do not report to work.
- **Code Yellow:** A Code Yellow is called when conditions may be dangerous but are anticipated to improve so as to allow employees to safely get to work.
  - Schools closed for all students and 10- and 11-month employees.
  - All emergency personnel report as usual.
  - All other 12-month employees report up to 2 hours late (Code Yellow).
  - Liberal leave is in effect. Employees must notify their immediate supervisor.
- **Code Green:** A code green is called when students are not reporting to school due to inclement weather, but conditions are safe for employees to report at the normal time.
  - Schools closed for all students and 10- and 11-month employees.
  - All emergency personnel report as usual.
  - All 12-month employees report on time (Code Green).
  - Liberal leave is in effect. Employees must notify their immediate supervisor.

### **WHEN SCHOOLS ARE DELAYED\***

- **Two-Hour Delayed Opening**
  - School opening will be delayed 2 hours.
  - The workday for 10- and 11-month employees will begin 30 minutes before the scheduled student starting time.
  - 12-month employees, including emergency personnel, report on time.
  - Food service workers report on time.
- **Two-Hour Delayed Opening - Code 1**
  - School opening will be delayed 2 hours.
  - The workday for 10- and 11-month employees will begin 30 minutes before the scheduled student starting time.
  - 12-month personnel report up to 1 hour late (Code 1).
  - All emergency personnel report on time.
  - Food service workers report on time.

### **Early Dismissals\***

- **Two-Hour Early Dismissal**
  - Schools closed two hours early.

- 10- and 11-month employees will be released no later than 30 minutes after student dismissal time.
- 12-month personnel, including emergency personnel, will work regular hours unless released by the Superintendent or his/her designee.
- **One-Hour Early Dismissal**
  - Schools closed one hour early.
  - 10- and 11-month employees will be released no later than 30 minutes after student dismissal time.
  - 12-month personnel, including emergency personnel, will work regular hours unless released by the Superintendent or his/her designee.

\* Typically, a two-hour delay or two-hour early release will be used when conditions warrant. In unusual circumstances, other schedules such as a three-hour delay or three-hour early dismissal may be used at the Superintendent's discretion.

### **Liberal Leave Policy**

- Employees are granted leave without prior written notification or requests being made. Employees must notify their supervisor and complete any necessary leave slips upon their return to work.

Administration 1510.3

Procedures Written: Unknown

Procedures Revised: 10/23/00; 4/14/05; 11/1/06; 2/1/07; 10/16/07; 3/10/09; 3/1/10, 1/13/11

Reviewed Without Changes: 3/13/08

**THIS PAGE LEFT BLANK**

## Directory of Schools

| Elementary   |  | Middle   |  |  |
|--|--|--|--|--|
| <p><u>Appeal Elementary School</u><br/>Principal: Charles Trefl<br/>410-535-7800 Fax: 410-326-6996<br/>11655 H.G. Trueman Road<br/>Lusby, MD 20657<br/>Vice Principal: Lisa Morgan</p>                               | <p><u>Barstow Elementary School</u><br/>Principal: Donna House<br/>443-486-4770 Fax: 410-535-4069<br/>295 J.W. Williams Road<br/>Prince Frederick, MD 20678<br/>Vice Principal: Brock Fulton</p>               | <p><u>Calvert Middle School</u><br/>Principal: Bruce Hutchison<br/>410-535-7355, 301-855-1163 Fax: 410-535-7430<br/>655 Chesapeake Boulevard<br/>Prince Frederick, MD 20678<br/>Vice Principal: Catherine Sutton</p>                                       | <p><u>Mill Creek Middle School</u><br/>Principal: Rebecca Bowen<br/>410-535-7824 Fax: 410-535-7829<br/>12200 Southern Connector Boulevard<br/>Lusby, MD 20657<br/>Vice Principal: Abbe Gray</p>  |  |
| <p><u>Beach Elementary School</u><br/>Principal: Michael Shisler<br/>410-257-1512, 301-855-7191 Fax: 410-257-0502<br/>7900 Old Bayside Road<br/>Chesapeake Beach, MD 20732<br/>Vice Principal: Pamela Kasulke</p>    | <p><u>Calvert Elementary School</u><br/>Principal: Kim Harris<br/>410-535-7311, 301-855-9213 Fax: 410-535-7473<br/>1450 Dares Beach Road<br/>Prince Frederick, MD 20678<br/>Vice Principal: Kevin Jackson</p>  | <p><u>Northern Middle School</u><br/>Principal: Darrel Prioleau<br/>410-257-1622, 301-855-5636 Fax: 410-257-1623<br/>2954 Chaneyville Road<br/>Owings, MD 20736<br/>Vice Principal: Bryan Sammons</p>  | <p><u>Plum Point Middle School</u><br/>Principal: Zachary Seawell<br/>410-535-7400, 301-855-1523 Fax: 410-535-7413<br/>1475 Plum Point Road<br/>Huntingtown, MD 20639<br/>Vice Principal: Kelly Griffith</p>   |  |
| <p><u>Dowell Elementary School</u><br/>Principal: Jennifer Young<br/>410-535-7802 Fax: 410-535-7803<br/>12680 H.G. Trueman Road<br/>Lusby, MD 20657<br/>Vice Principal: Jessica Reynolds</p>                         | <p><u>Huntingtown Elementary School</u><br/>Principal: Ramona Crowley<br/>410-535-7212, 301-855-1787 Fax: 410-535-7224<br/>4345 Huntingtown Road<br/>Huntingtown, MD 20639<br/>Vice Principal: Kara Scarda</p> | <p><u>Southern Middle School</u><br/>Principal: Jamie Webster<br/>410-535-7877 Fax: 410-535-7879<br/>9615 H.G. Trueman Road<br/>Lusby, MD 20657<br/>Vice Principal: Mandy Blackmon</p>   | <p><u>Windy Hill Middle School</u><br/>Principal: James Kurtz<br/>410-257-1560, 301-855-0300 Fax: 410-257-4586<br/>9560 Boyd's Turn Road<br/>Owings, MD 20736<br/>Vice Principal: Jason Patton</p>   |  |
| High   |  | High   |  |  |
| <p><u>Mt. Harmony Elementary School</u><br/>Principal: Liz Gebelein<br/>410-257-1611, 301-855-5246 Fax: 410-257-1628<br/>900 West Mt. Harmony Road<br/>Owings, MD 20736<br/>Vice Principal: Valerie Weems-Garber</p> | <p><u>Mutual Elementary School</u><br/>Principal: Lisa Wisniewski<br/>410-535-7700 Fax: 410-535-7701<br/>1455 Ball Road<br/>Port Republic, MD 20676<br/>Vice Principal: Stacy Hawxhurst</p>                    | <p><u>Calvert High School</u><br/>Principal: Susan Johnson<br/>410-535-7330, 301-855-1521 Fax: 410-535-7200<br/>520 Fox Run Boulevard<br/>Prince Frederick, MD 20678<br/>Vice Principals: James Carpenter, Rob Lawrence, Britni Sammons, Marcus Watson</p> | <p><u>Huntingtown High School</u><br/>Principal: Rick Weber<br/>410-414-7036, 301-855-9031 Fax: 410-535-2865<br/>4125 N. Solomons Island Road<br/>Huntingtown, MD 20639<br/>Vice Principals: Sabrina Bergen, Dan Brown, Beth Morton, Dave Taylor</p>         |  |
| <p><u>Patuxent Elementary School</u><br/>Principal: Cheryl Johnson<br/>410-535-7830 Fax: 410-326-0828<br/>35 Appeal Lane<br/>Lusby, MD 20657<br/>Vice Principal: Michelle Ward</p>                                   | <p><u>Plum Point Elementary School</u><br/>Principal: Joyce King<br/>410-535-7390, 301-855-9649 Fax: 410-535-7327<br/>1245 Plum Point Road<br/>Huntingtown, MD 20639<br/>Vice Principal: Robert Watson</p>     | <p><u>Northern High School</u><br/>Principal: Kevin Howard<br/>410-257-1519, 301-855-6416 Fax: 410-257-1530<br/>2950 Chaneyville Road<br/>Owings, MD 20736<br/>Vice Principals: Larry Butler, Trey Sirman, Mark Whidden, Suzanne Zimmerman</p>             | <p><u>Patuxent High School</u><br/>Principal: Michael Watson<br/>410-535-7865, 410-326-9234 Fax: 410-535-7875<br/>12485 Southern Connector Boulevard<br/>Lusby, MD 20657<br/>Vice Principals: Francis Forrest, Steve Lucas, Anne Rickwood, Joseph Sutton</p> |  |
| <p><u>St. Leonard Elementary School</u><br/>Principal: Toni Chapman<br/>410-535-7714 Fax: 410-535-7726<br/>5370 St. Leonard Road<br/>St. Leonard, MD 20685<br/>Vice Principal: Maria Watson</p>                      | <p><u>Sunderland Elementary School</u><br/>Principal: Karen Vogel<br/>410-257-1501, 301-855-5180 Fax: 410-257-7569<br/>150 Clyde Jones Road<br/>Sunderland, MD 20689<br/>Vice Principal: Eric Ruffo</p>        | <th colspan="2" style="text-align: center;">Other Educational Facilities</th>  | Other Educational Facilities   |  |
| <p><u>Windy Hill Elementary School</u><br/>Principal: Kelley Adams<br/>410-257-1539, 301-812-0476 Fax: 410-257-7544<br/>9550 Boyd's Turn Road<br/>Owings, MD 20736<br/>Vice Principal: Connee Hart</p>               |    | <p><u>Calvert Country School</u><br/>Acting Principal: Paul Reilly<br/>410-535-7300 Fax: 410-535-7303<br/>1350 Dares Beach Road<br/>Prince Frederick, MD 20678<br/>Acting Vice Principal: Victoria Valentin</p>  | <p><u>Career and Technology Academy</u><br/>Principal: Mark Wilding<br/>410-535-7450, 301-855-9266 Fax: 410-535-7418<br/>330 Dorsey Road<br/>Prince Frederick, MD 20678<br/>Vice Principal: Dawn Ray</p>   |  |